



The Wesley is a beautiful four bedroom detached home with a separate garage.

The property benefits from a spacious family living room and a large open plan kitchen/diner, both of which have French doors to the rear garden providing a great space for family dining and entertaining. A separate reception room provides space for formal dining, a play room or office to suit. There is also a utility room, downstairs w/c and under stair storage.

The kitchen comes equipped with a quality Bosch oven, gas hob and extractor, with space for a washing machine, dishwasher and larder style fridge/freezer.

The first floor features a family bathroom, with separate bath and shower, and four bedrooms; the master bedroom having an ensuite.

The lounge, dining room and bedrooms are carpeted in neutral tones, with wood effect cermic tiles to the hall, kitchen/diner, utility and cloak room. The family bathroom and ensuite are fitted with oak effect vinyl.

Plot 39 with garage

Total Area = 121m²

Ground Floor

Kitchen/Breakfast

4.93m x 2.90m

Dining

2.74m x 2.66m

Utility

1.74m x 1.67m

Living

6.71m x 3.33m

First Floor

Bedroom 1

3.98m x 3.39m

Bedroom 3

3.29m x 2.54m

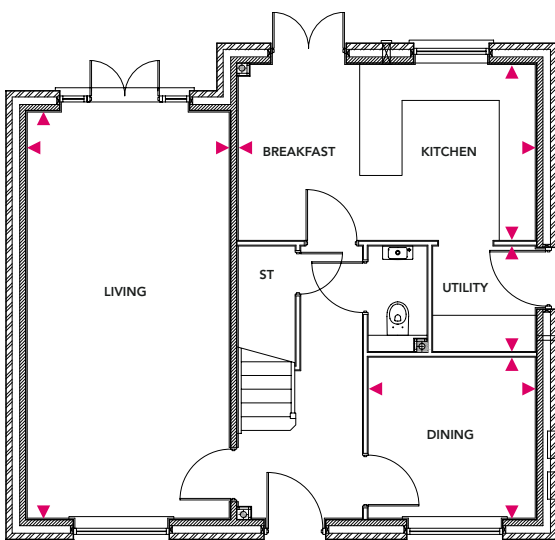
Bedroom 2

4.11m x 2.77m

Bedroom 4

2.64m x 2.32m

Ground Floor



First Floor

