



The welcoming hallway of the Weston opens onto a light and airy kitchen/diner which provides a great space to spend time and entertain.

The kitchen comes equipped with a quality Bosch oven, gas hob and extractor, with space for a washing machine, dishwasher and larder style fridge/freezer.

The hallway leads to a downstairs cloak room and beyond to a spacious lounge with French windows opening onto the garden.

Upstairs are two spacious double bedrooms and a stylish family bathroom. The lounge and bedrooms are carpeted in neutral tones, with wood effect ceramic tiles to the hall, kitchen/diner, and cloak room. The family bathroom and ensuite come complete with oak effect vinyl.

Plots 2[†], 3, 6, 7, 8[†], 9[†], 10[†], 14, 16-20, 27, 33[†], 34[†], 37

[†]affordable homes

Total Area = 63m²

Ground Floor

Kitchen/Dining

4.45m x 2.25m

Living

4.29m x 2.72m

First Floor

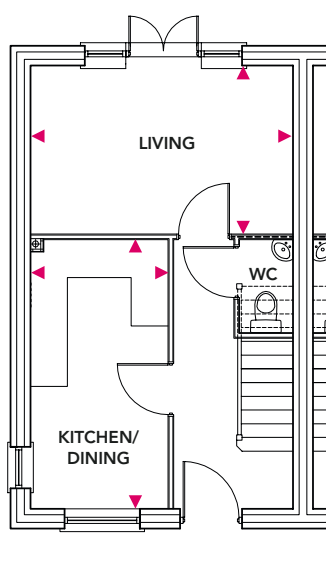
Bedroom 1

4.29m x 2.51m

Bedroom 2

3.28m x 2.59m

Ground Floor



First Floor

