

**Plots 4, 6, 14-19**

**Total Area = 85.9m<sup>2</sup>**

## Ground Floor

### Kitchen/Dining

5.24m x 2.86m

### Living

5.10m x 3.14m

## First Floor

### Bedroom 1

3.33m x 3.09m

### Bedroom 2

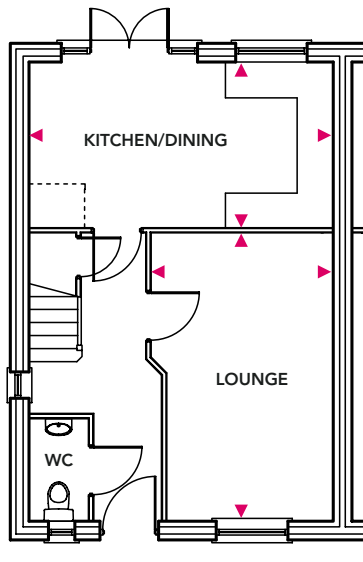
3.45m x 2.75m

### Bedroom 3

2.96m x 2.40m



## Ground Floor



## First Floor

