

Plots 1-3, 5, 8, 10-13, 31-33

Total Area = 63.2m²

Ground Floor

Kitchen/Dining

4.45m x 2.25m

Living

4.29m x 2.72m

First Floor

Bedroom 1

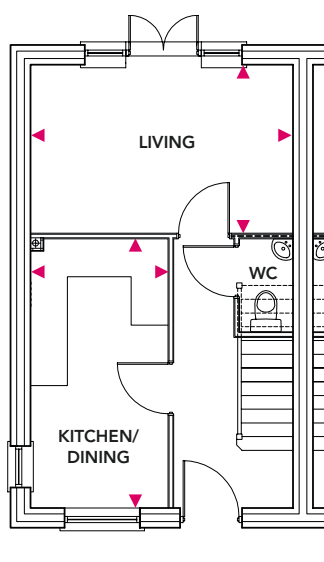
4.29m x 2.51m

Bedroom 2

3.28m x 2.59m



Ground Floor



First Floor

