

**Plots 24, 25**

**Total Area = 89.9m<sup>2</sup>**

## Ground Floor

**Kitchen/Dining**

4.68m x 3.75m

**Living**

5.34m x 3.23m

## First Floor

**Bedroom 1**

4.05m x 3.23m

**Bedroom 2**

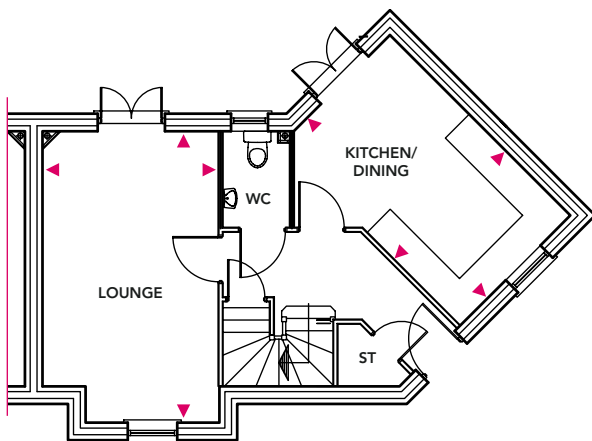
5.25m x 2.48m

**Bedroom 3**

3.71m x 2.10 m



**Ground Floor**



**First Floor**

