



A place to call home

Miners' Walk Madeley



The new way to rent your Nuplace in Telford

Welcome to Miners' Walk

Miners' Walk features **53 two and three bedroom homes** to rent in Madeley, located on the doorstep of local amenities and retailers in Madeley Local Centre and coming soon to a new retail development off Parkway.

The site benefits from being close the picturesque Ironbridge World Heritage site and offers easy access to Telford town centre and the M54.

For those interested in visiting Telford Ski Slope you'll be pleased to know these facilities are also close by.

If you're looking to rent a Nuplace home at Miners' Walk, this brochure contains all of the information you need.





■ Steps
 — Streetlight

- Weston**
 2 bedroom
 Plots 6, 10, 11, 13-15, 17-19, 20*, 24, 26-35, 37, 40†, 41†, 45-48, 52†
- Kedington**
 2 bedroom
 Plots 5, 9, 16, 25, 38, 39, 53
- Westwood**
 3 bedroom
 Plots 1, 2*, 3*, 4*, 7, 8, 12*, 21*, 22*, 23*, 36*, 42*†, 43*†, 44*†, 49*, 50*, 51*

* with garage
 † plots with stepped garden

The development layout plan depicts the intended layout and development mix. Please note it does not show details of gradients of land, boundary treatments or a definitive landscaping layout. It is our intention to build in accordance with this layout. However, there may be occasions when the house designs, boundaries, landscaping and positions of roads and footpaths change. Please check the details of your chosen property with the Nuplace team.

Plots 6, 10, 11, 13-15, 17-19, 20*,
24, 26-35, 37, 40, 41, 45-48, 52

*with garage, see site plan for details

Total Area = 63m²

Ground Floor

Kitchen/Dining

4.45m x 2.25m

Living

4.29m x 2.72m

First Floor

Bedroom 1

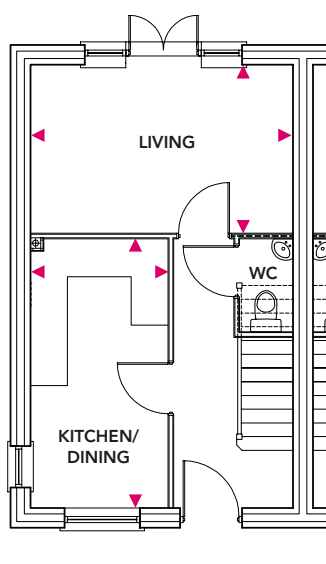
4.29m x 2.51m

Bedroom 2

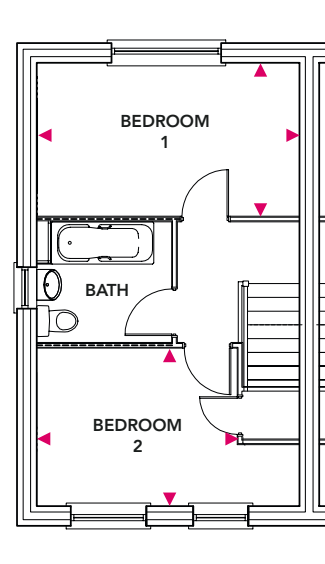
3.28m x 2.59m



Ground Floor



First Floor



Plots 5, 9, 16, 25, 38, 39, 53

Total Area = 69m²

Ground Floor

Kitchen/Dining

4.23m x 2.49m

Living

4.23m x 2.83m

First Floor

Bedroom 1

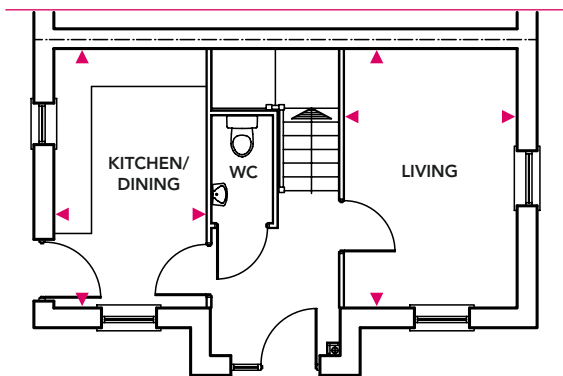
4.23m x 2.83m

Bedroom 2

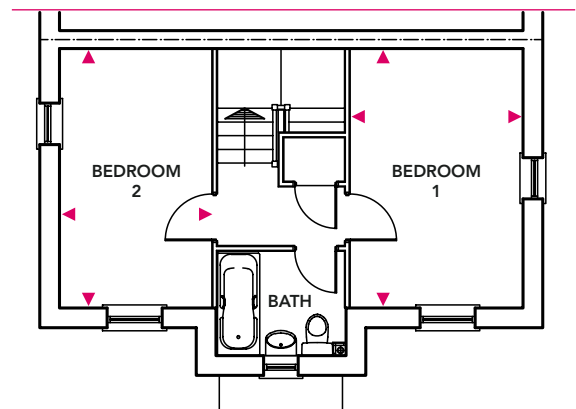
4.23m x 2.49m



Ground Floor



First Floor



Plots 1, 2*, 3*, 4*, 7, 8, 12*, 21*, 22*, 23*, 36*, 42*, 43*, 44*, 49*, 50*, 51*

**with garage, see site plan for details*

Total Area = 85.9m²

Ground Floor

Kitchen/Dining

5.24m x 2.86m

Living

5.10m x 3.14m

First Floor

Bedroom 1

3.33m x 3.09m

Bedroom 2

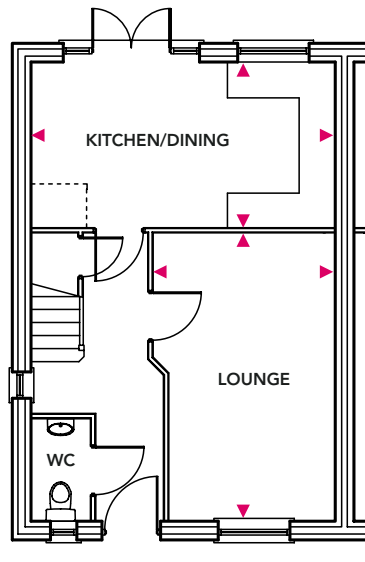
3.45m x 2.75m

Bedroom 3

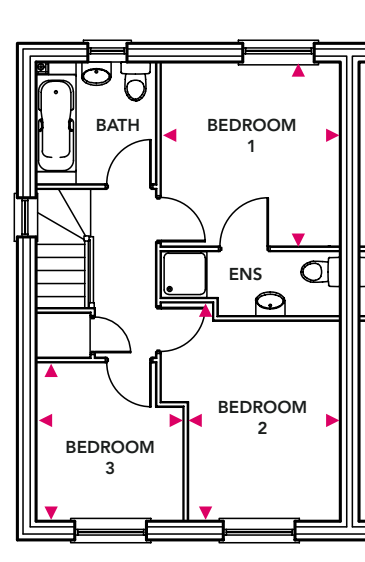
2.96m x 2.40m



Ground Floor



First Floor



Miners' Walk, Madeley, TF7 5DZ

Education	
Nursery, Infant & Primary Schools	Distance
John Fletcher Primary School	0.6 miles (Catchment area)
Secondary & Higher Education	
Madeley Academy	0.7 (Catchment area)
Telford College of Arts & Technology	6.4 miles
Further Education	
University of Wolverhampton, Telford Campus	
To find out what other educational establishments are also in this area visit www.telford.gov.uk/admissions	

Transport		
Bus stop	Bus service	Route
Madeley Court	1	Woodside, Aqueduct, Dawley & Town Centre.
	2	Sutton Hill, Brookside, Dawley & Town Centre
	4	Woodside, Stirchley, Randlay, Town Centre, Oakengates, Wellington, PRH & Leegomery.
	18	Town Centre, Madeley, Ironbridge, Broseley & Much Wenlock
	96	Town Centre, Stirchley, Madeley, Ironbridge, Atcham & Shrewsbury
Telford Town Centre, Bus Station, Northfield Street		Central Bus Station – 4.4 miles
For more information about local bus services visit www.arriva.co.uk		
Train Service	Distance	
Telford Central	4.4 miles	
For information about local train routes visit www.nationalrail.co.uk		
Motorway Links	Distance	
M54 Junction 4	4.8 miles	

Local Amenities	Distance
Nearest Aspirations Centre is Abraham Darby Sports and Leisure Centre	1.2 miles
Park Lane Centre – Chemist, Sure Start Nursery and Community Centre	0.9 miles
Tesco Superstore Madeley	0.3 miles
Hill Top News (Premier convenience store)	1 mile
ALDI Madeley	0.3 miles
First Point (Madeley)	0.6 mile
Madeley Library	0.6 miles
First Point (Southwater)	4.3 miles
Local Attractions	Distance
Telford Ski Slope	200 yards
Ironbridge	2.4 miles
Horsehay Village Golf Centre	4.1 miles
Telford Town Park	4.3 miles
Wonderland (Telford Town Park)	4.3 miles
Telford International Centre	4.3 miles
Southwater	4.3 miles
Cineworld Telford	4.3 miles
Telford Ice Rink	4.3 miles
Telford Shopping Centre	4.6 miles
Oakengates Theatre	5.6 miles
Business Parks	Distance
Stafford Park	4.5 miles
Telford 54	4.1 miles
Healthcare	Distance
Doctors	
Court Street Medical Practice	100 yards
Dentist	
Madeley Dental Practice	0.3 miles
Hospital	
Telford Princess Royal Hospital	7.6 miles
Your nearest NHS Walk-in Centre is in Telford Town Centre	5.1 miles

Miners' Walk, Madeley - Reserve your plot today!

Plot No.	House Name	Rent (per calendar month)
6, 10, 11, 13, 14, 15, 17, 18, 19, 20*, 24, 26, 27, 28, 29, 30, 31, 32, 33, 34, 35, 37, 40, 41, 45, 46, 47, 48, 52	Weston 2 bedroom house	From £600
5, 9, 16, 25, 38, 39, 53	Kedington 2 bedroom house	From £620
1, 2*, 3*, 4*, 7, 8, 12*, 21*, 22*, 23*, 36*, 42*, 43*, 44*, 49*, 50*, 51*	Westwood 3 bedroom house	From £675

*Plots include a garage.

Plots 1-4, 45-53 due for release in Winter 2017/18

Plots 5-15, 39-44 due for release in Spring 2018

Plots 16-38 due for release in Summer 2018

Holding fee - To make sure you don't miss out on a Nuplace home, you can reserve your plot now for £200.

Deposit - Six weeks rent plus one month's rent is required prior to the handover of keys.

Rental prices correct as of January 2017