



Telford & Wrekin
Co-operative Council

Protect, care and invest
to create a better borough



A place to call home

at

Wrekin Hall Apartments Wellington



Welcome to Wrekin Hall Apartments

Welcome to Wrekin Hall Apartments, 1 Walker Street. Nuplace is proud to offer the unique opportunity to rent high quality living accommodation at 1 Walker Street, the former YMCA Victorian landmark building in the heart of Wellington.

This building is currently being fully restored including the refurbishment of the ground floor retail unit and the creation of nine apartments located on the upper floors.

This sales pack will tell you everything you need to know about Nuplace's nine apartments which are available to rent at this new exciting development.

Properties include eight 1 bedroom apartments and one 2 bedroom apartment available for private rent.

For details about this development and what is available please visit:

www.nuplace.co.uk/wrekinhallapartments



www.nuplace.co.uk





Located on the first floor of this spectacular historic building, apartments 1-4 offer accommodation across a single level and are full of character with feature windows.

Apartment 1

1 bedroom apartment

Total area = 49m²

Kitchen/Dining/Living

5m x 4.5m

Bedroom 1

3.1m x 2.6m

Apartment 2

1 bedroom apartment

Total area = 42m²

Kitchen/Dining/Living

5m x 4.5m

Bedroom 1

3m x 2.4m

Apartment 3

1 bedroom apartment

Total area = 39m²

Kitchen/Dining/Living

5.8m x 3.2m

Bedroom 1

3.2m x 2.5m

Apartment 4

1 bedroom apartment

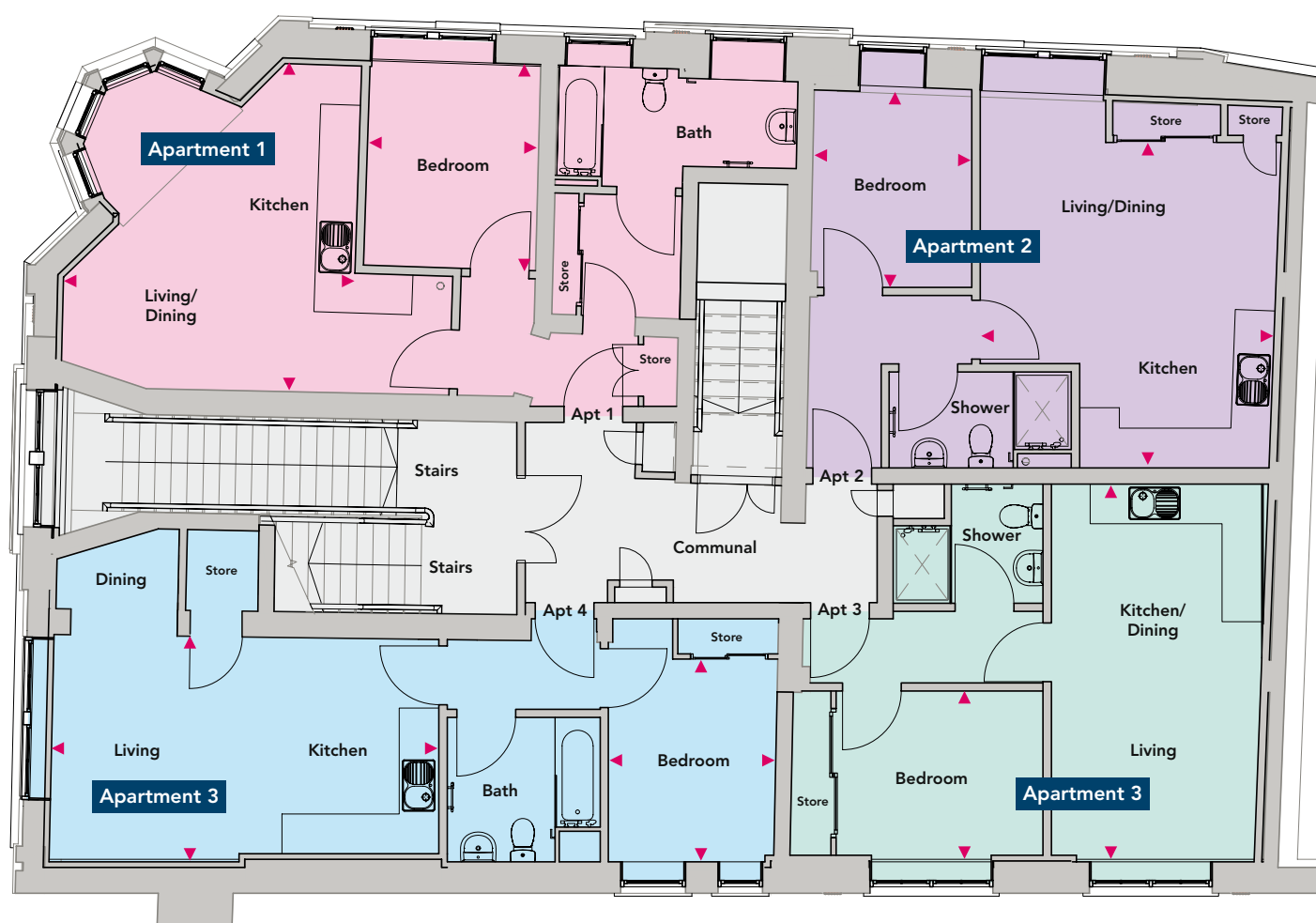
Total area = 42m²

Kitchen/Dining/Living

6m x 3.5m

Bedroom 1

3.1m x 2.5m



Located on the second floor of this spectacular historic building, apartments 5-9 offer accommodation over two levels with the addition of a mezzanine floor, making the most out of the large feature windows.

Apartment 5

1 bedroom apartment

Total area = 68m²

Kitchen/Dining

4.2m x 3.1m

Living

5.4m x 3.9m

Apartment 6

2 bedroom apartment

Total area = 82m²

Kitchen

4.5m x 2.7m

Living/Dining

7m x 3m

Apartment 7

1 bedroom apartment

Total area = 71m²

Kitchen/Dining/Living

5.9m x 5.1m

Apartment 8

1 bedroom apartment

Total area = 49m²

Kitchen/Dining/Living

4.2m x 3.8m

Apartment 9

1 bedroom apartment

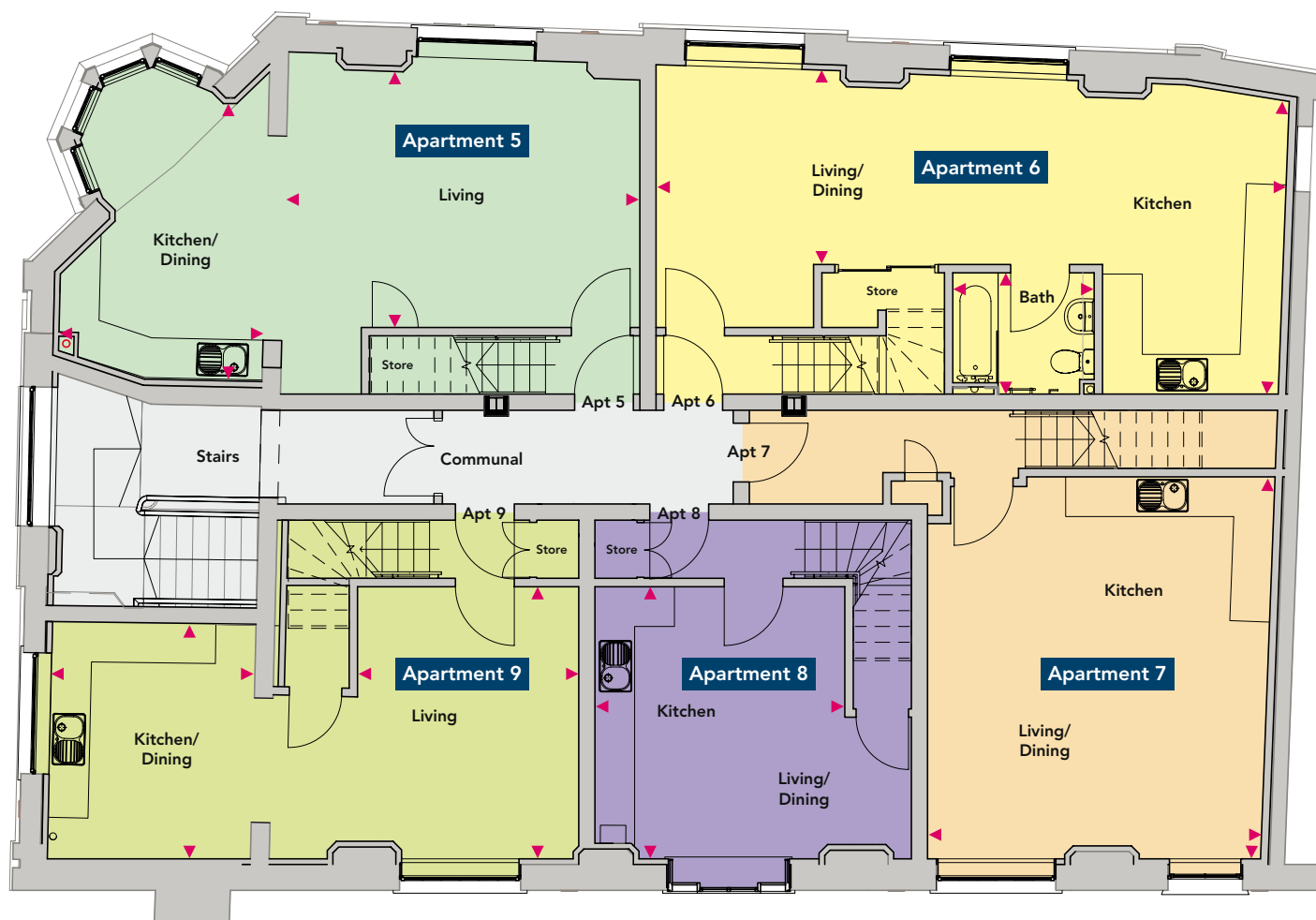
Total area = 60m²

Kitchen/Dining

3.6m x 3.1m

Living

4.2m x 3.4m



Apartment 5

1 bedroom apartment

Total area = 68m²

Bedroom 1

5.4m x 2.7m

Apartment 6

2 bedroom apartment

Total area = 82m²

Bedroom 1

3.9m x 3.3m

Bedroom 2

3.4m x 2.7m

Apartment 7

1 bedroom apartment

Total area = 71m²

Bedroom 1

5.2m x 2.8m

Apartment 8

1 bedroom apartment

Total area = 49m²

Bedroom 1

3.8m x 2.8m

Apartment 9

1 bedroom apartment

Total area = 60m²

Bedroom 1

3.4m x 2.8m

