



Telford & Wrekin
Co-operative Council

Protect, care and invest
to create a better borough



A place to call home

at

Old Gower School House St. Georges



Welcome to The Gower

This development features 13 stunning 2-bedroom homes, of which 3 properties form part of the renovation to the Grade II Listed building and a further 10 new build properties within the curtilage of the site.

Nuplace is also working with Telford & Wrekin Council and St Georges & Priorslee Parish Council to deliver a renovation scheme which will both protect the existing Gower Building as well as bring it back into use. Therefore, alongside the residential development, the central and northern wing of the existing building will also be refurbished to deliver community facilities and office accommodation.

Located just on the outskirts of Telford Shopping Centre, you are also a short walking distance from local amenities.

This sales pack will tell you everything you need to know about the homes available to rent at this brand-new exciting development.

For details about the wider development and what is available please visit:

www.nuplace.co.uk/thegower




www.nuplace.co.uk

Heritage range

We are proud to present our range of heritage properties within our portfolio.

The old Gower School was listed on 30 May 2014 as Grade II, on the grounds of its rarity, architectural quality, and historical and sociological significance within the community. Therefore, it has always been our aim to ensure that the renovation of this building actively preserves the historic character for years to come.

Our development also ensures that many of the original architectural styles and features are maintained which also protects and enhances the integrity of the building.

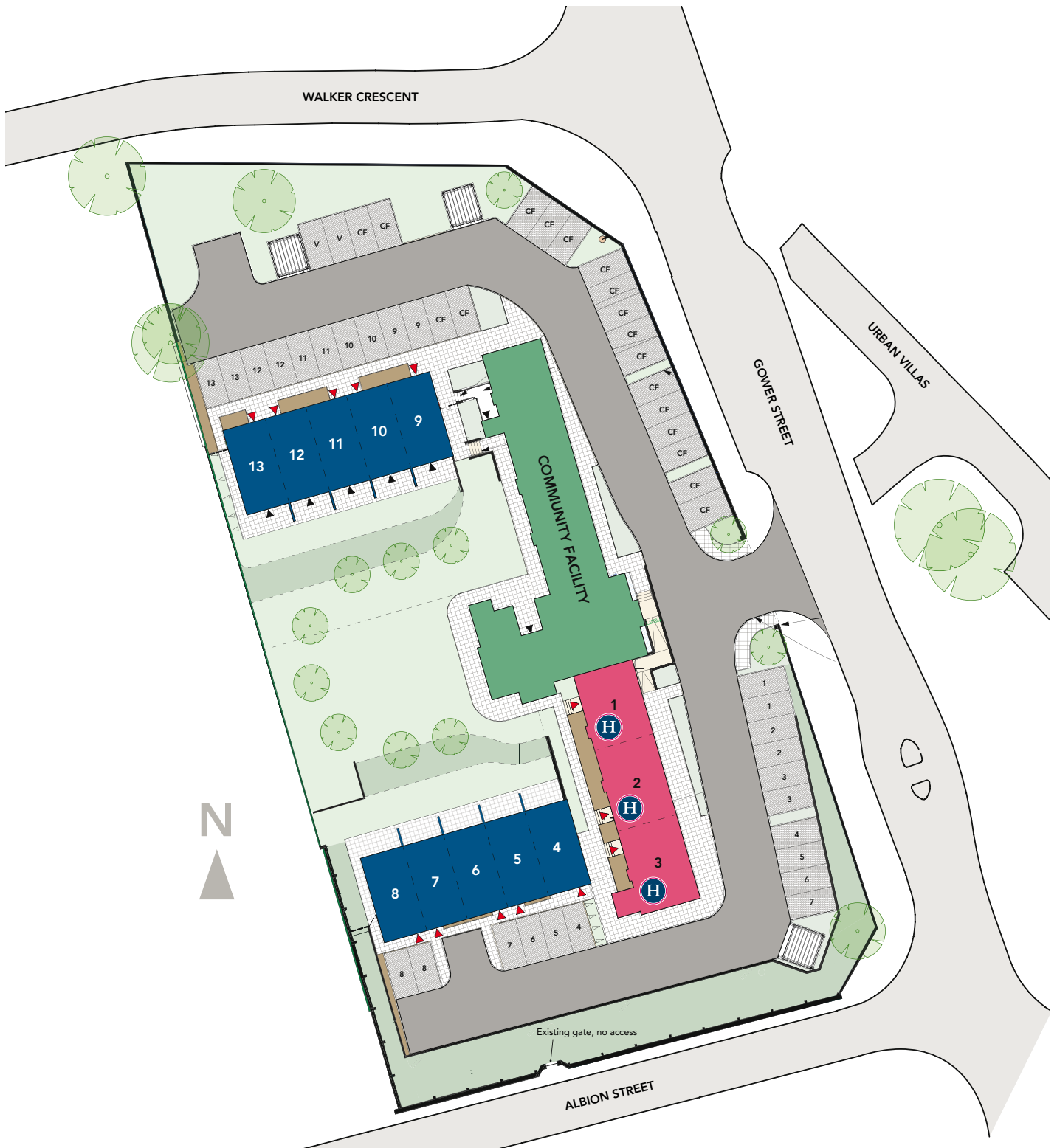
All of our heritage properties at the development can be found by looking out for the  within this sales pack.

HERITAGE

— PROPERTY —



www.nuplace.co.uk



General accommodation



Millington

2 bedroom house
Plots 4-7, 8*, 9-12, 13*



Community Centre



Horton*

2 bedroom house
Plots 1-3

Key

- *Heritage renovated property
- Property with EV charger

HERITAGE
— PROPERTY —



2 bedroom house

Plot 1

Total area = 64m²

Ground Floor

Kitchen/Dining/Living

5.17m x 3.37m

Bedroom 2

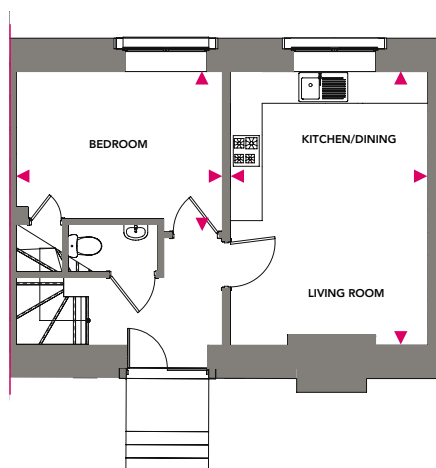
3.90m x 3.03m

First Floor

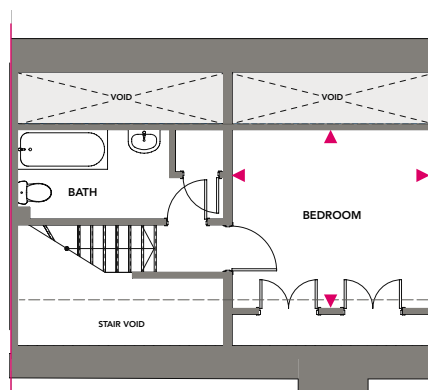
Bedroom 1

3.73m x 3.37m

Ground Floor



First Floor





2 bedroom house

Plot 2

Total area = 71m²

Ground Floor

Kitchen/Dining/Living

5.17m x 4.62m

Bedroom 2

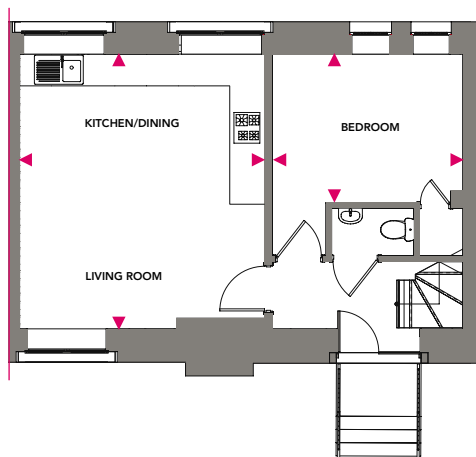
3.60m x 2.80m

First Floor

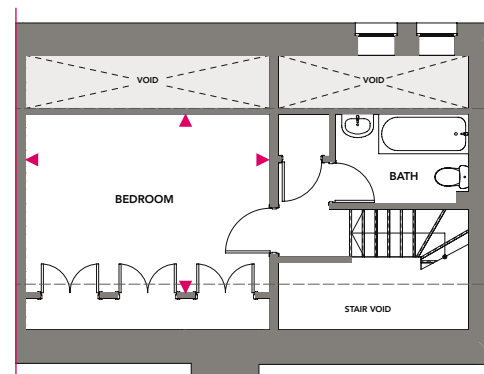
Bedroom 1

4.62m x 3.37m

Ground Floor



First Floor





2 bedroom house

Plot 3

Total area = 73m²

Ground Floor

Kitchen/Dining/Living

5.29m x 4.48m

Study

1.97m x 1.81m

Bedroom 2

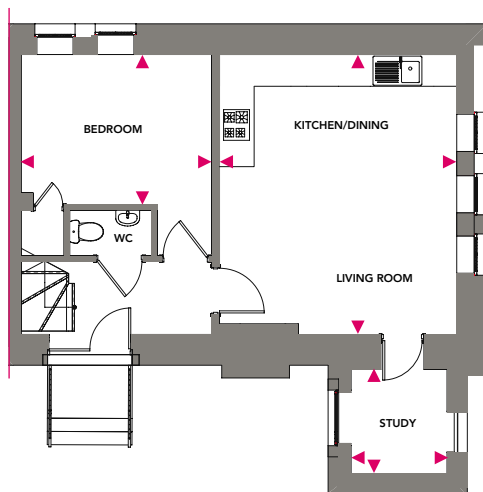
3.60m x 2.83m

First Floor

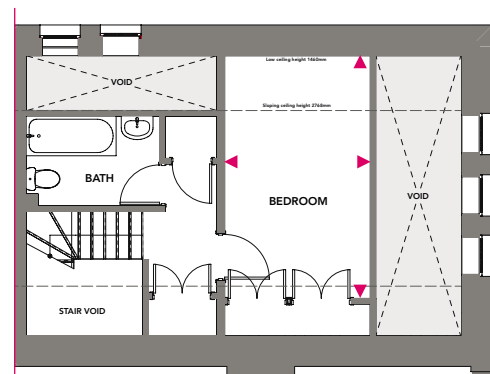
Bedroom 1

4.58m x 2.75m

Ground Floor



First Floor





2 bedroom house

Plots 4-7, 8[•], 9-12, 13[•]

•Property with EV charger

Total area = 71m²

Ground Floor

Kitchen/Dining

4.13m x 3.58m

Living Room

3.61m x 3.18m

First Floor

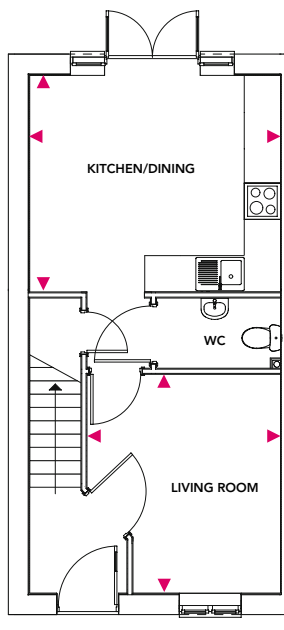
Bedroom 1

4.13m x 3.54m

Bedroom 2

4.13m x 2.50m

Ground Floor



First Floor

