



Telford & Wrekin
Co-operative Council

Protect, care and invest
to create a better borough



A place to call home

at

Limes Walk
Oakengates



Welcome to Limes Walk

Located off Limes Walk, at the heart of Oakengates, Telford, this exciting scheme provides ten, 1 and 2 bedroom first floor apartments above refurbished commercial units.

The homes are a central part of the Theatre Quarter Project which seeks to regenerate this area of the town, boosting footfall and transforming the 1960s shopping precinct into a modern, welcoming shopping experience for residents and visitors alike.

The apartments provide excellent access to local amenities within the bustling Oakengates Town Centre and within walking distance of the town's train and bus stations.

All of the properties will benefit from solar panels and new thermal upgrades to the building envelope.

For details about this development and what is available please visit:

www.nuplace.co.uk/limeswalk

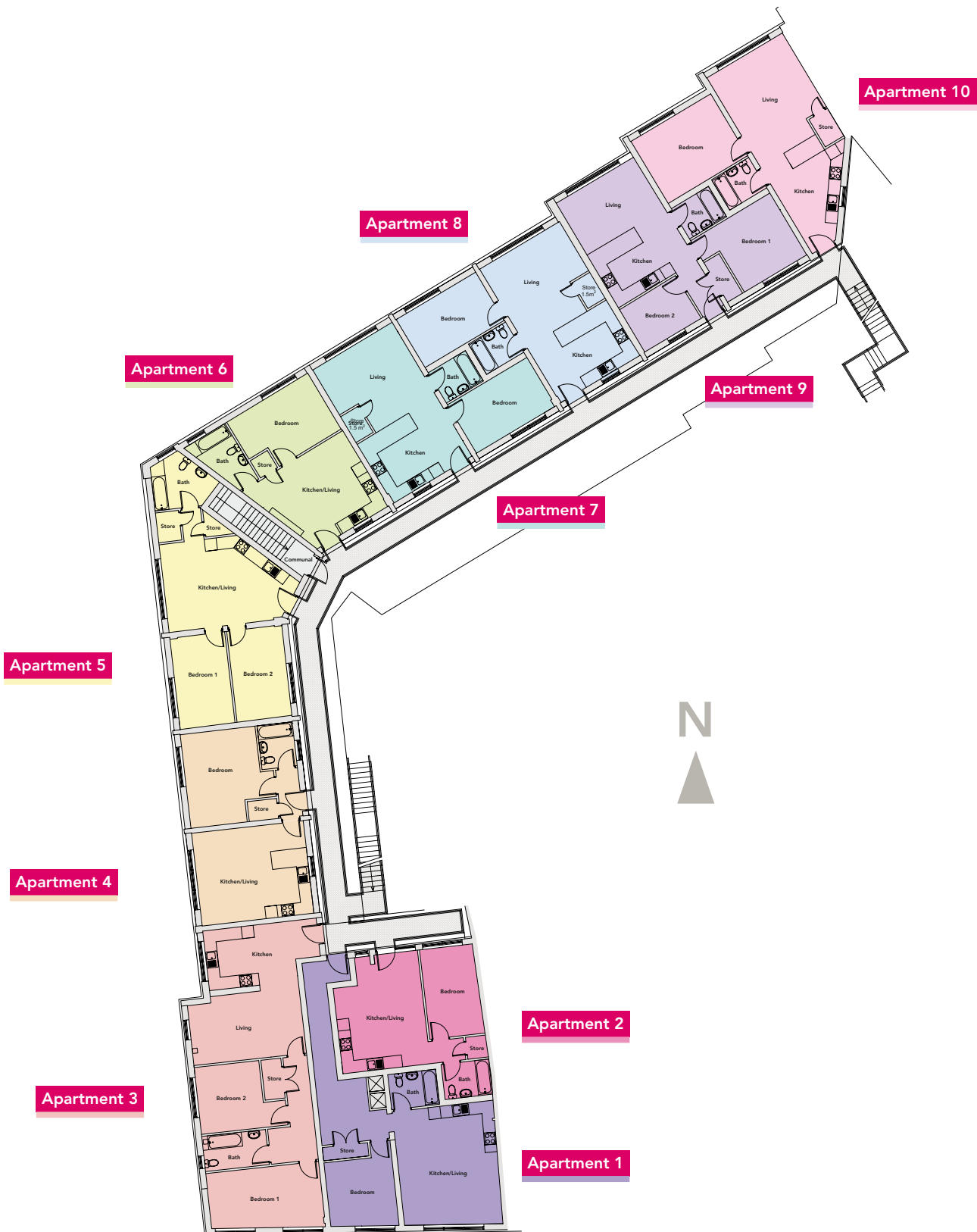


www.nuplace.co.uk









1 bedroom apartment

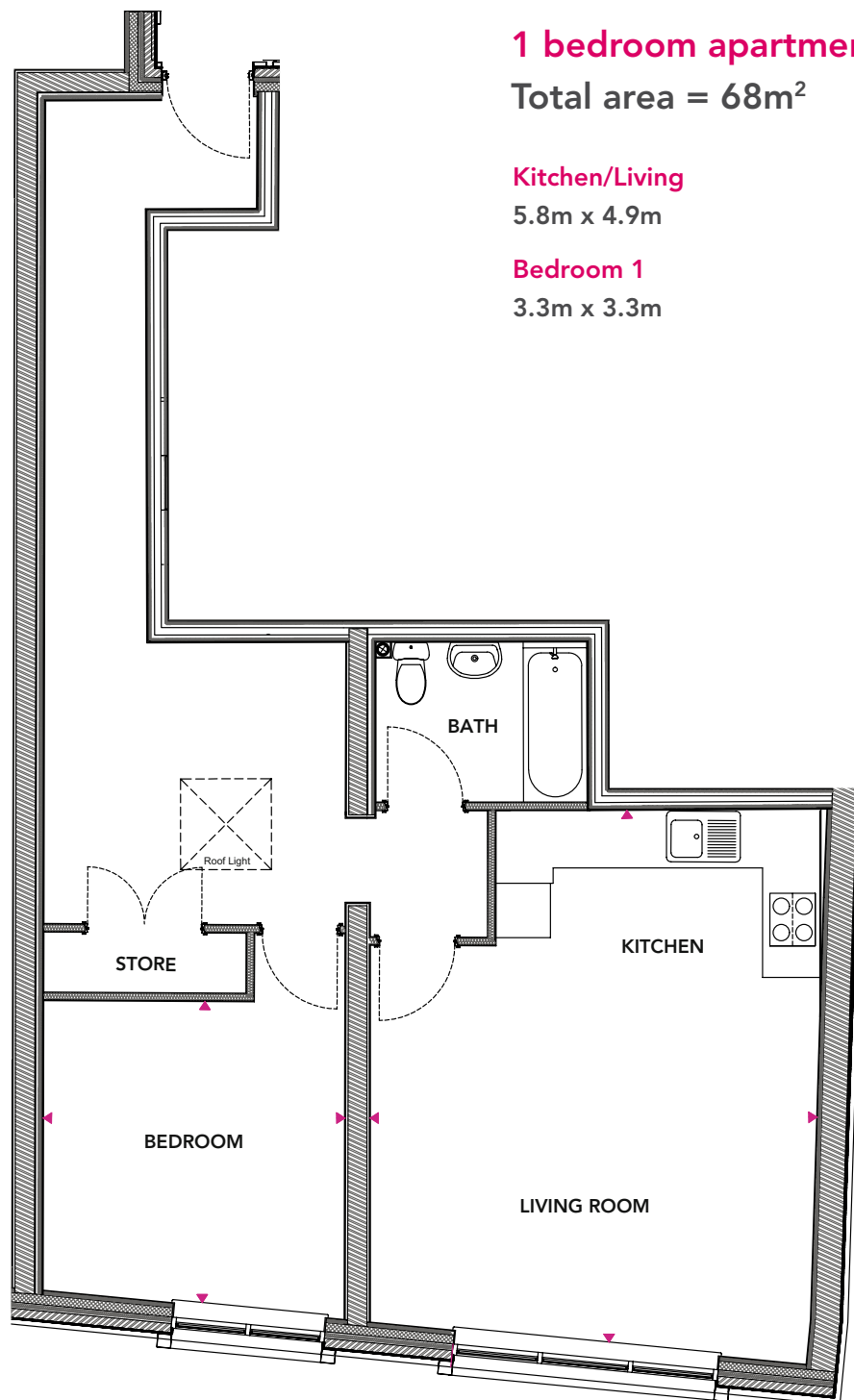
Total area = 68m²

Kitchen/Living

5.8m x 4.9m

Bedroom 1

3.3m x 3.3m



1 bedroom apartment

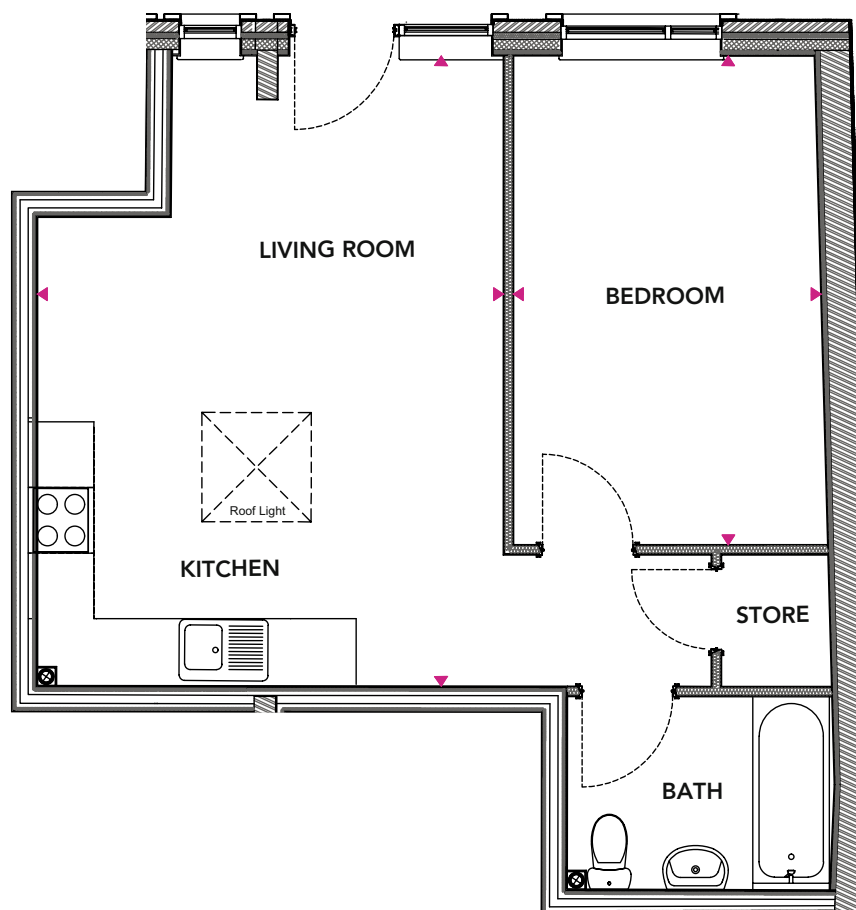
Total area = 44m²

Kitchen/Living

5.7m x 4.2m

Bedroom 1

4.4m x 2.8m



Apartment 3

Limes Walk, Oakengates

2 bedroom apartment

Total area = 82m²

Kitchen/Living

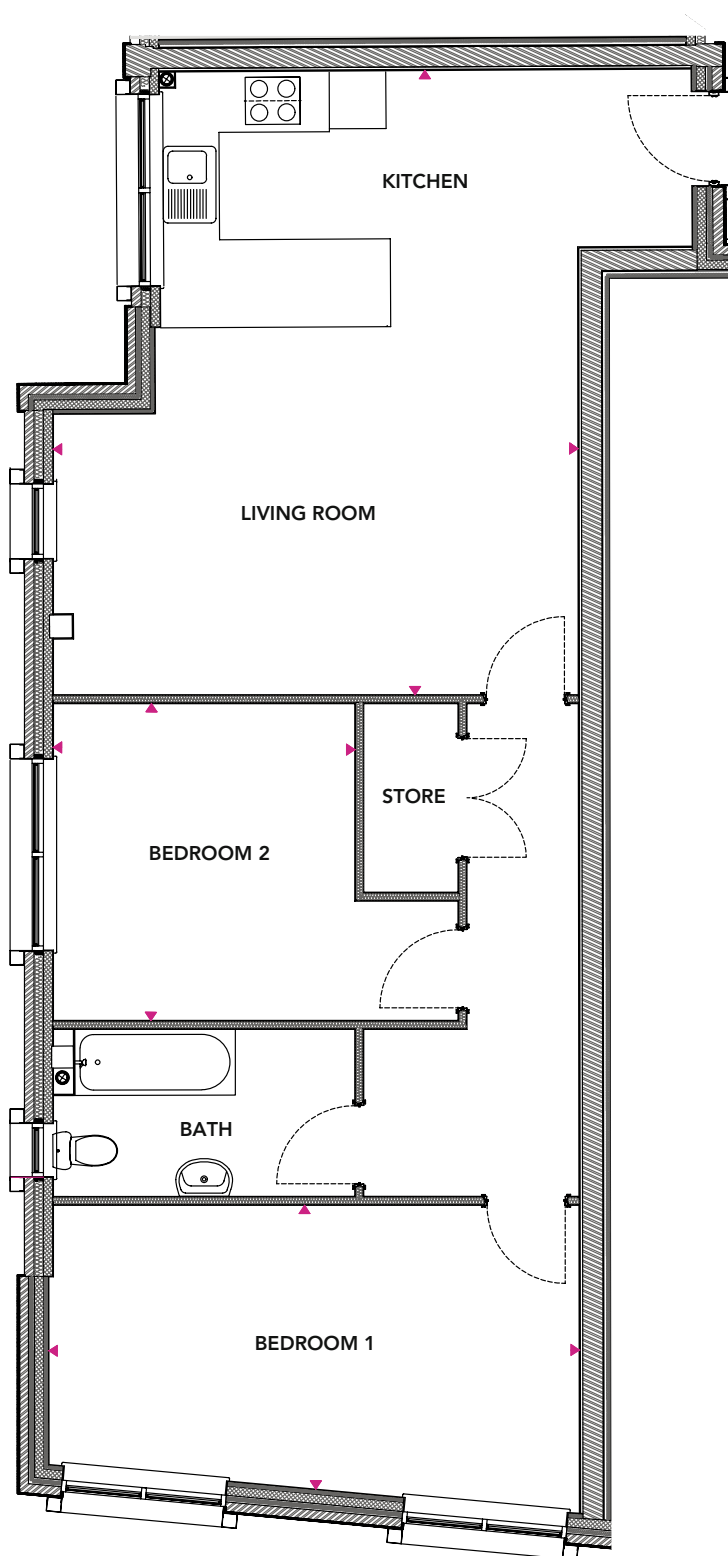
6.6m x 5.5m

Bedroom 1

5.6m x 2.9m

Bedroom 2

3.3m x 3.1m



1 bedroom apartment

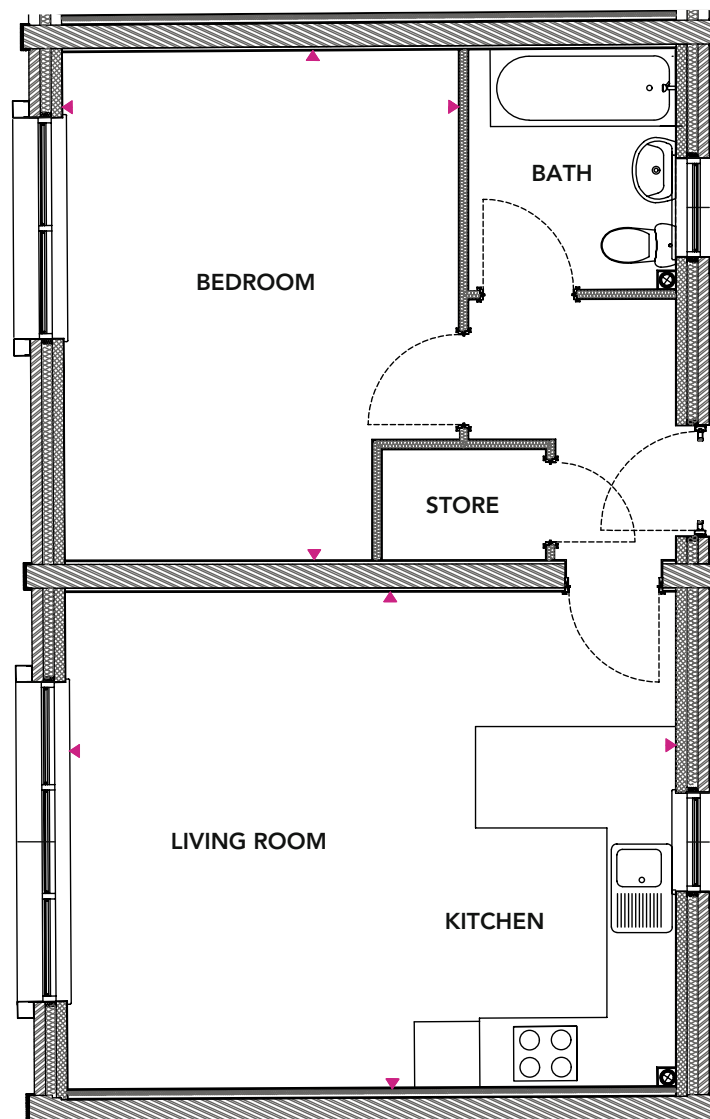
Total area = 53m²

Kitchen/Living

5.5m x 4.5m

Bedroom 1

4.6m x 3.6m



2 bedroom apartment

Total area = 63m²

Kitchen/Living

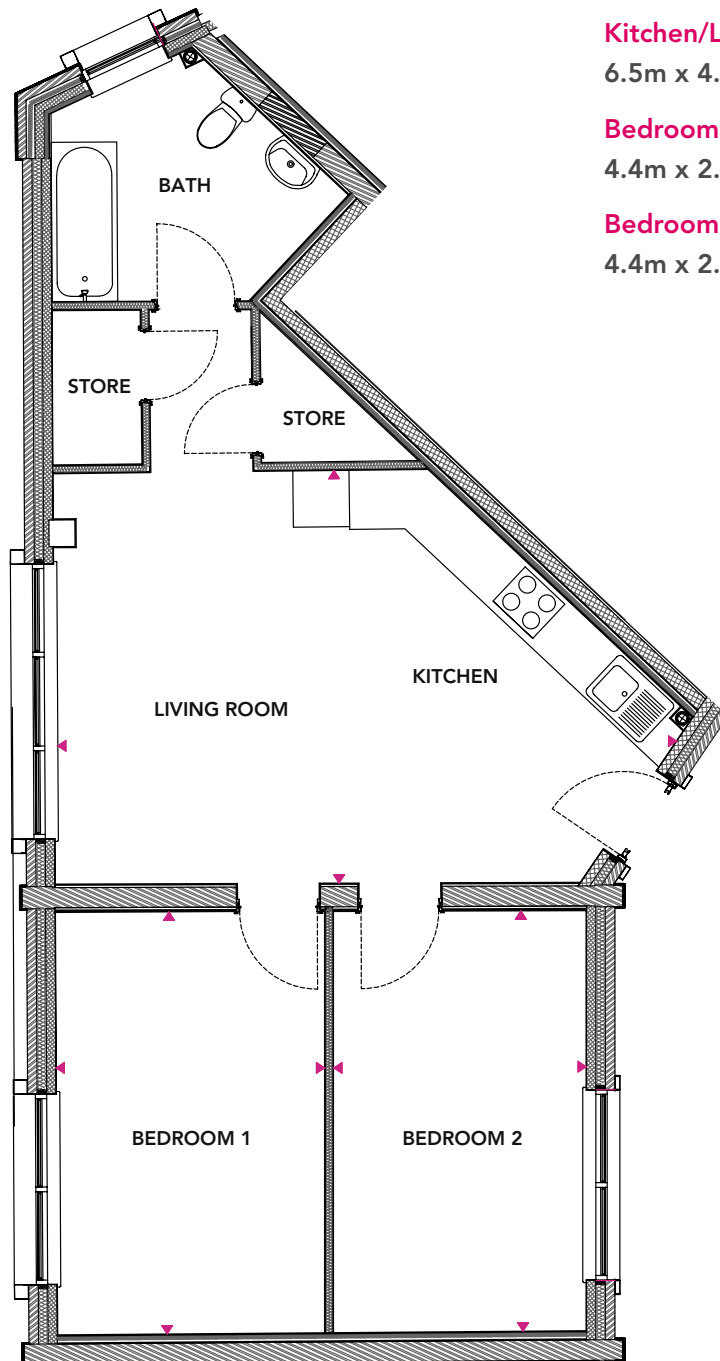
6.5m x 4.4m

Bedroom 1

4.4m x 2.8m

Bedroom 2

4.4m x 2.6m



Apartment 6

Limes Walk, Oakengates

1 bedroom apartment

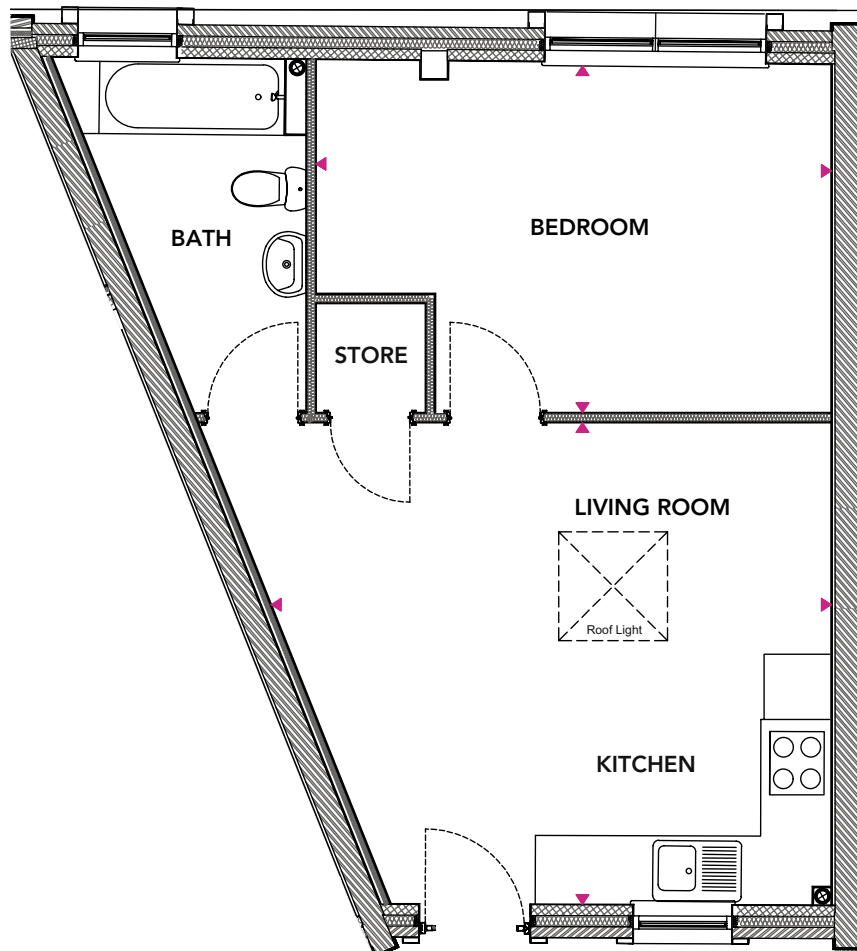
Total area = 43m²

Kitchen/Living

5.1m x 4.4m

Bedroom 1

4.7m x 3.2m



1 bedroom apartment

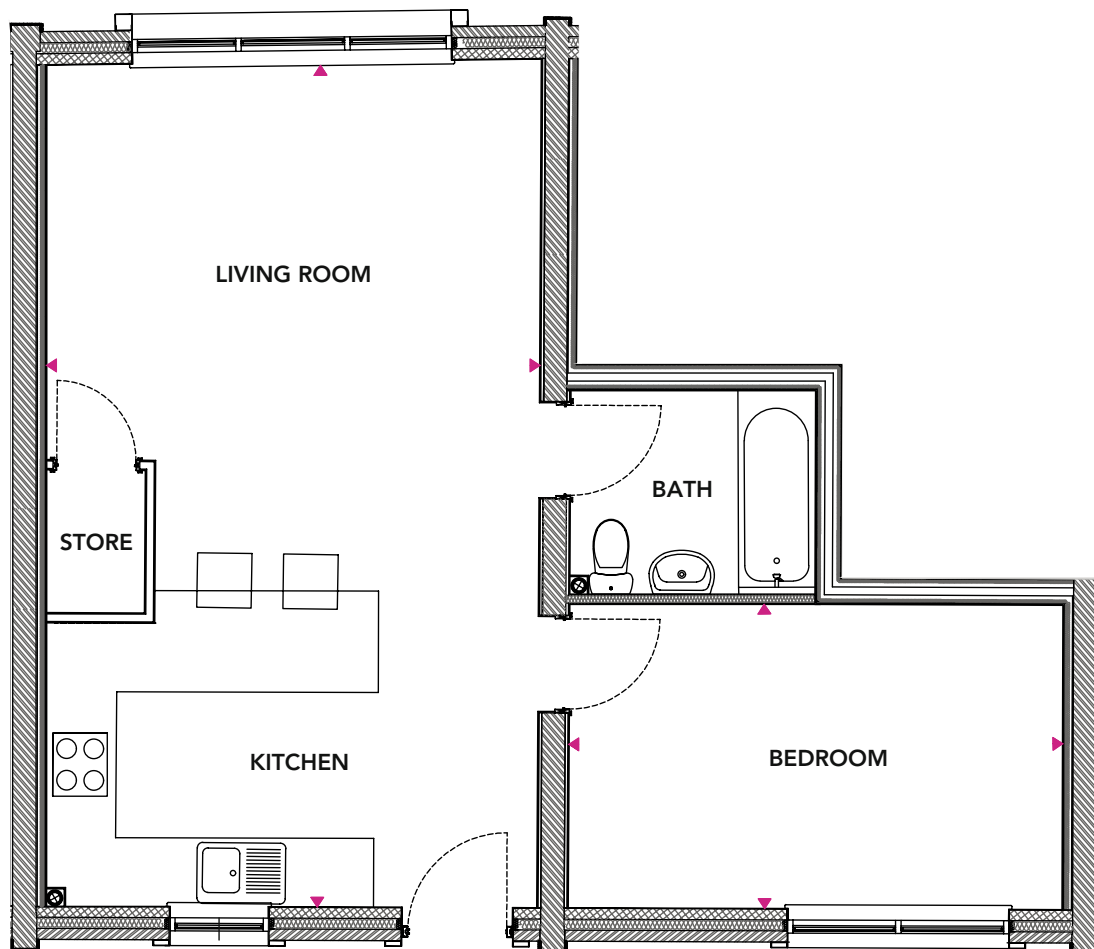
Total area = 54m²

Kitchen/Living

7.7m x 4.5m

Bedroom 1

4.5m x 2.8m



Apartment 8

Limes Walk, Oakengates

1 bedroom apartment

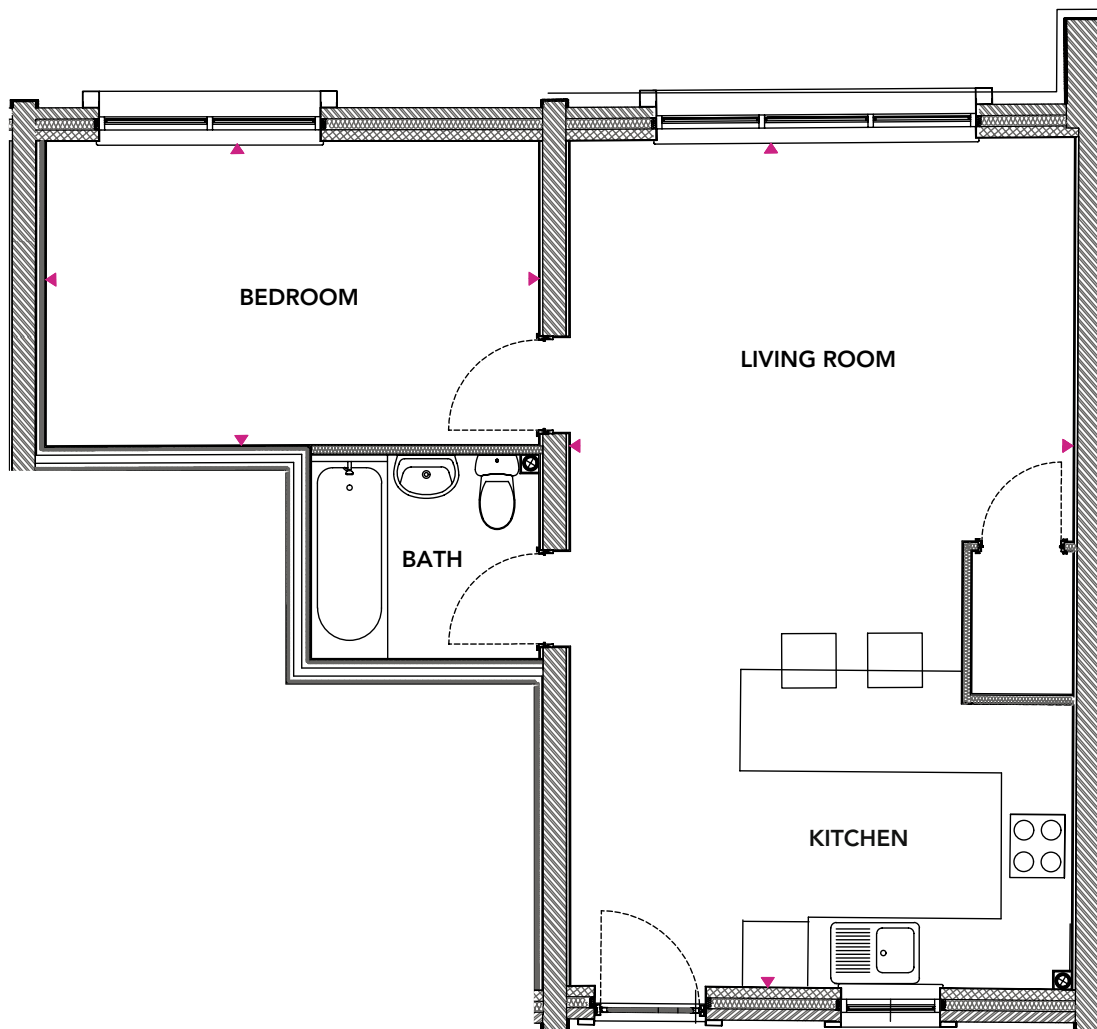
Total area = 54m²

Kitchen/Living

7.7m x 4.6m

Bedroom 1

4.5m x 2.8m



2 bedroom apartment

Total area = 61m²

Kitchen/Living

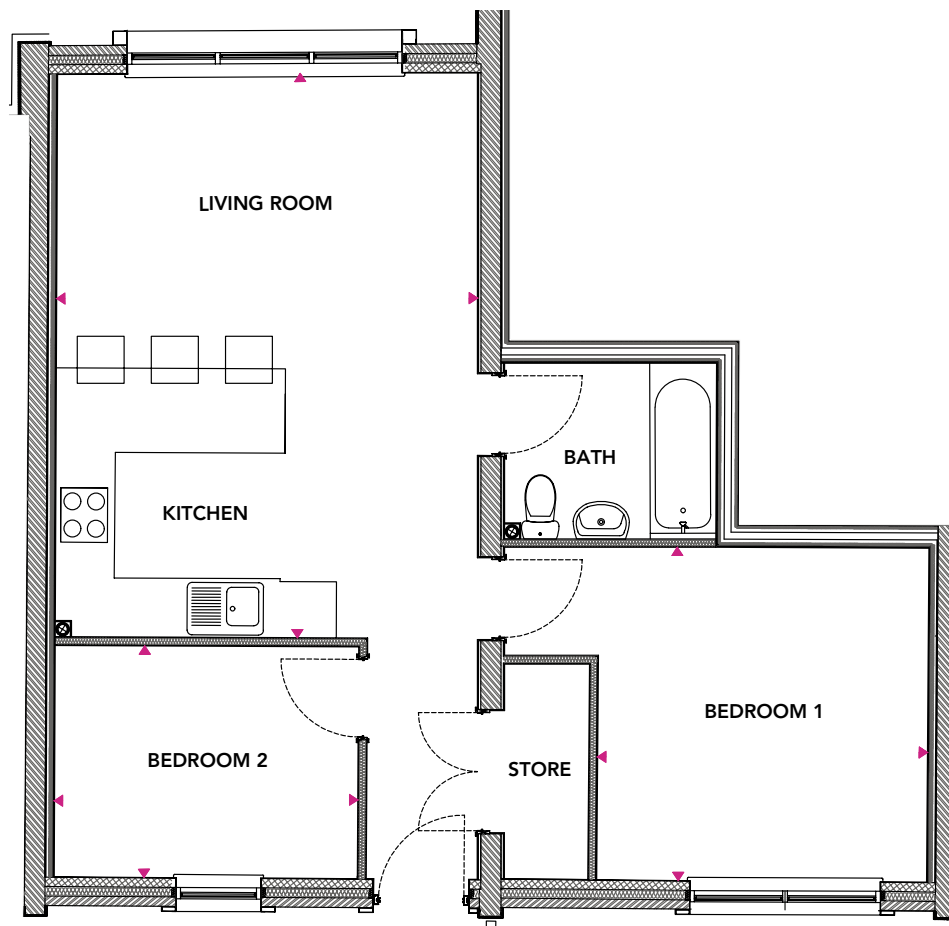
6m x 4.4m

Bedroom 1

3.5m x 3.5m

Bedroom 2

3.2m x 2.4m



1 bedroom apartment

Total area = 60m²

Kitchen/Living

10m x 4.3m

Bedroom 1

4.5m x 3.5m

