



Telford & Wrekin
Co-operative Council

Protect, care and invest
to create a better borough



A place to call home

The College Wellington



Welcome to The College

The College is a brand-new development located off King Street and Regent Street in the heart of Wellington, Telford.

This exciting new sustainable development benefits from its proximity to amenities within the bustling Wellington Town Centre and is within easy walking distance of Wellington train station and Bus Station.

The development is being bought forward by Telford & Wrekin Council, Nuplace and Housing Association partner, Wrekin Housing Group and will offer:

- 20 two and three and bedroom sustainable homes for private rent with Nuplace. All properties come with solar panels and EV charging points.
- A retirement living scheme comprising of 64 apartments and 10 bungalows brought forward by Wrekin Housing Group.

To find out more about the retirement living scheme please visit the [Wrekin Housing Group \(WHG\) website](#).

This sales pack will tell you everything you need to know about Nuplace's which are available to rent at this new exciting development and will available from autumn 2024.

If you would like to receive all the latest Nuplace news, including details of new sites as they are confirmed [sign up to Nuplace's email list](#).



Tackling climate change

Nuplace is proud to be building this brand new sustainable development in Wellington which will be benchmark for all future Nuplace sites as well as other housing schemes in the borough.

The College is a sustainable development and has been designed in accordance with the council's commitment to tackle climate change. All of our properties will benefit from solar panels and their own electric car charging points. This step forward within Nuplace's specification will not only reduce the scheme's carbon footprint, but it will also help reduce fuel bills for our tenants.

Please note, the number of solar panels fitted to individual properties will vary depending on the roof orientation of our homes – if you are interested in finding out more about specific plots please get in touch.



These images show examples of Nuplace's sustainable homes from Southwater Way



www.nuplace.co.uk



General accommodation



Weston

2 bedroom house
Plots 3, 4, 8, 9, 10, 16



Ringwood

3 bedroom house
Plots 13*, 19*, 20*



Kedington

2 bedroom house
Plots 7, 17



Westwood

3 bedroom house
Plots 2, 5, 11, 12, 14, 15



Manswood

3 bedroom house
Plots 1, 6, 18

Key

*With garage, see site/floor plans for details



2 bedroom house

Plot 3, 4, 8, 9, 10, 16

Total Area = 71m²

Ground Floor

Kitchen/Dining

4.42m x 2.28m

Living

4.34m x 2.75m

First Floor

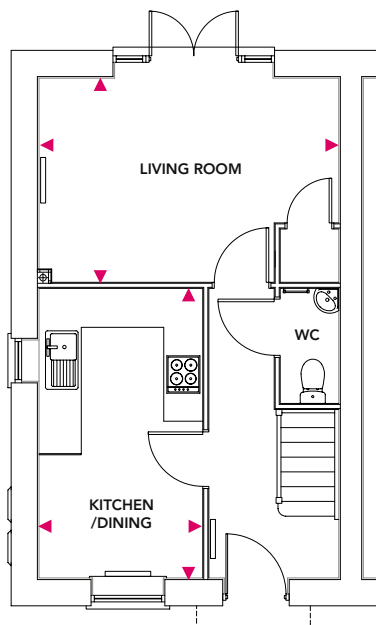
Bedroom 1

4.34m x 2.50m

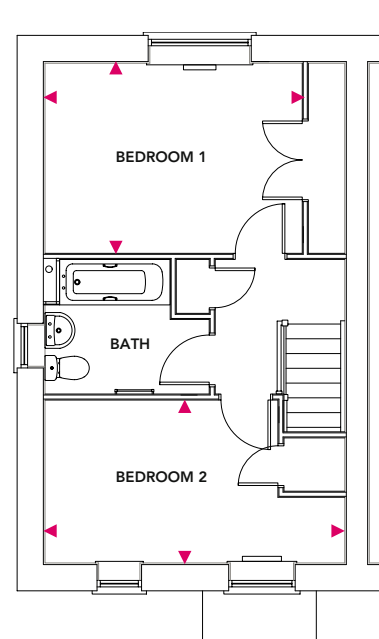
Bedroom 2

4.34m x 2.57m

Ground Floor



First Floor





2 bedroom house

Plots 7, 17

Total Area = 71m²

Ground Floor

Kitchen/Dining

4.23m x 2.49m

Living

4.23m x 2.83m

First Floor

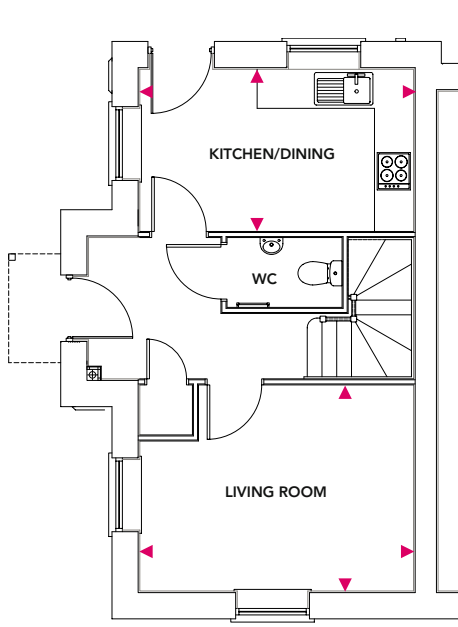
Bedroom 1

4.23m x 2.83m

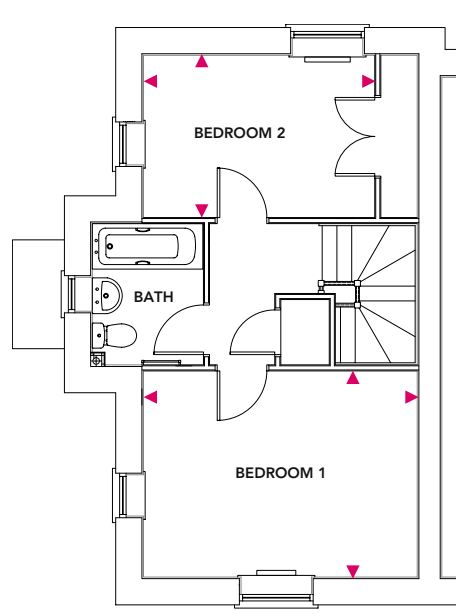
Bedroom 2

4.23m x 2.49m

Ground Floor



First Floor





3 bedroom house

Plots 13, 19, 20

Total Area = 86m²

Ground Floor

Kitchen/Dining

4.23m x 4.15m

Living

3.92m x 3.24m

First Floor

Bedroom 1

4.11m x 2.99m

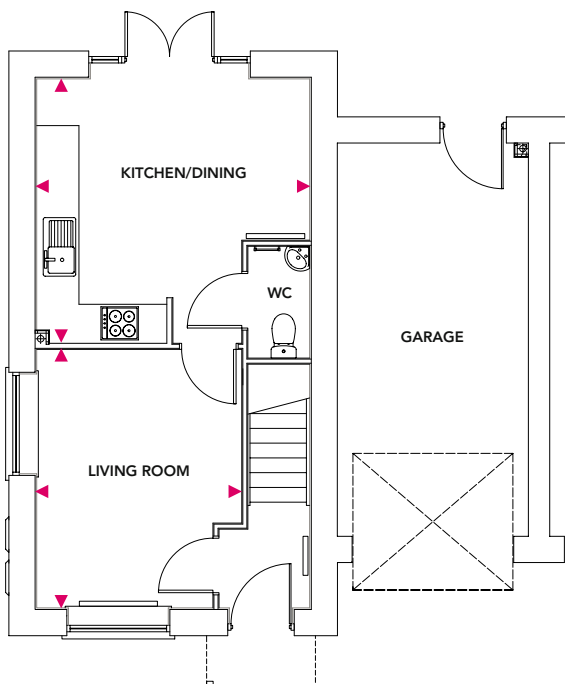
Bedroom 3

4.23m x 3.47m

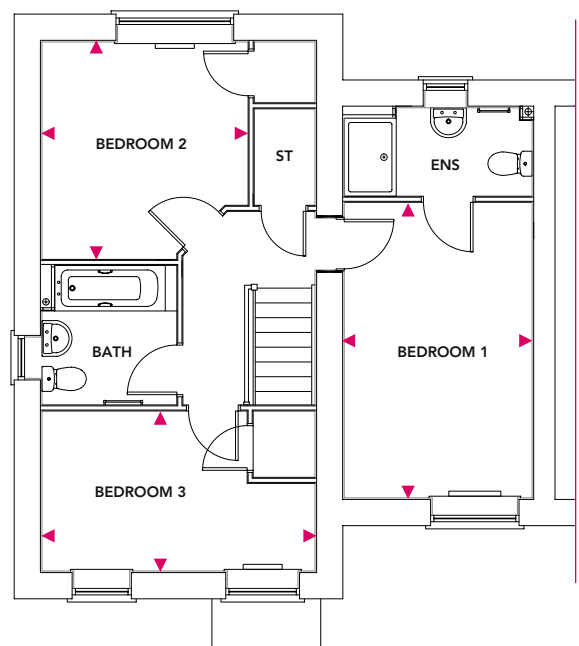
Bedroom 2

4.23m x 2.44m

Ground Floor



First Floor



*With garage, see site/floor plans for details

www.nuplace.co.uk

Dimensions stated are approximate measurements only and should not be used as a basis for furnishings, furniture or appliance spaces etc. Dimensions for such purposes must be verified against actual site measurements. Please note the handing of plots may vary from the floor plans shown. Please check individual plot details with the Nuplace team. CGI images are for illustrative purposes only. Materials and finishes may vary from the images displayed.



3 bedroom house

Plots 2, 5, 11, 12, 14, 15

Total Area = 85m²

Ground Floor

Kitchen/Dining

5.24m x 2.86m

Living

5.10m x 3.14m

First Floor

Bedroom 1

3.33m x 3.09m

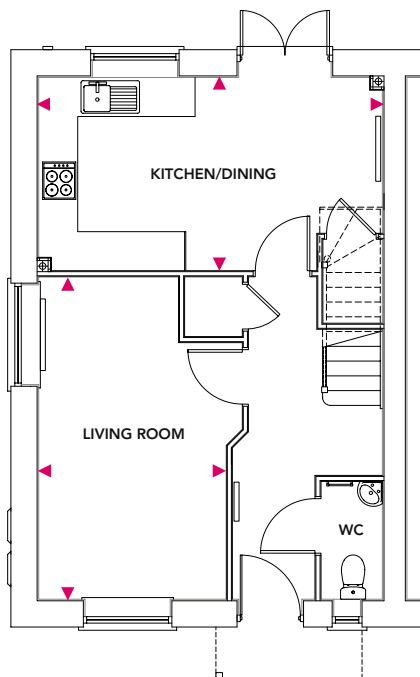
Bedroom 2

3.45m x 3.09m

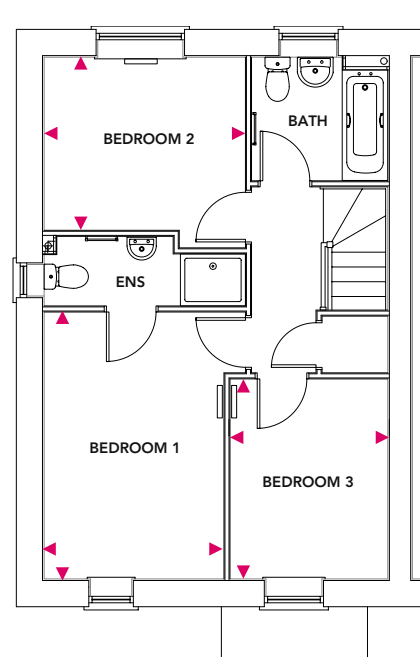
Bedroom 3

2.88m x 2.40m

Ground Floor



First Floor





3 bedroom house

Plots 1, 6, 18

Total Area = 85m²

Ground Floor

Kitchen/Dining

5.24m x 2.79m

Living

5.24m x 3.03m

First Floor

Bedroom 1

3.85m x 2.79m

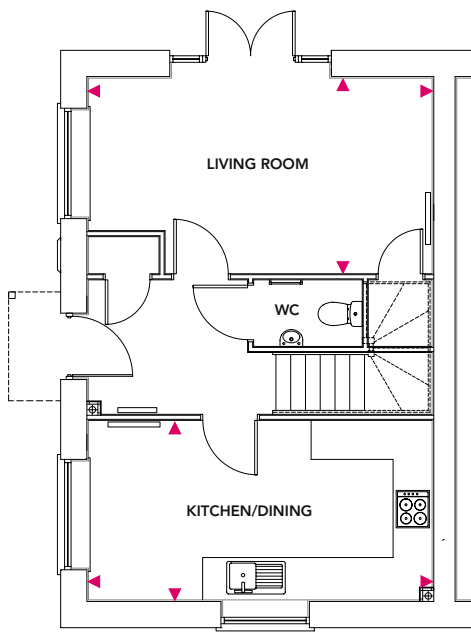
Bedroom 3

3.03m x 2.16m

Bedroom 2

3.03m x 2.98m

Ground Floor



First Floor

