



www.nuplace.co.uk

The Appleby is a beautiful four bedroom, two and a half storey home. The property benefits from a spacious family living room with French doors which open to the rear garden.

A large open plan kitchen/diner provides a great space for family dining and entertaining. The kitchen comes equipped with a high quality Bosch double oven, gas hob and extractor, with space for a washing machine, dishwasher and fridge/freezer.

The first floor features three sizeable bedrooms and the family bathroom. The master bedroom and ensuite are situated on the second floor of the property.

The lounge and bedrooms are carpeted in neutral tones, with wood effect ceramic tiles to the hall, kitchen/diner, cloak room and vinyl to the family bathroom and ensuite.

Plots 5-7, 8*, 9*, 10*, 31, 32
*terraced garden

Total Area = 112m²

Ground Floor

Kitchen/Dining

4.29m x 2.74m

Living

4.91m x 3.56m

First Floor

Bedroom 2

4.02m x 2.71m

Bedroom 3

3.82m x 2.71m

Bedroom 4

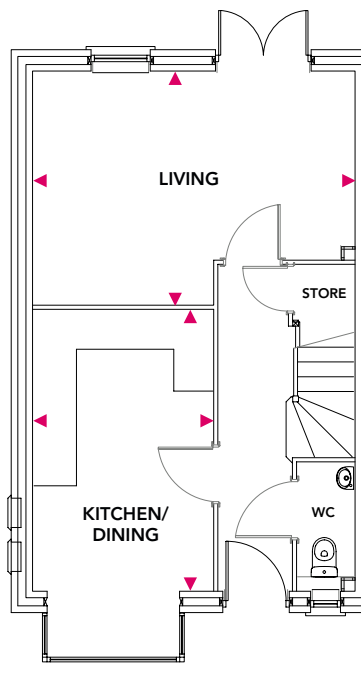
2.86m x 2.10m

Second Floor

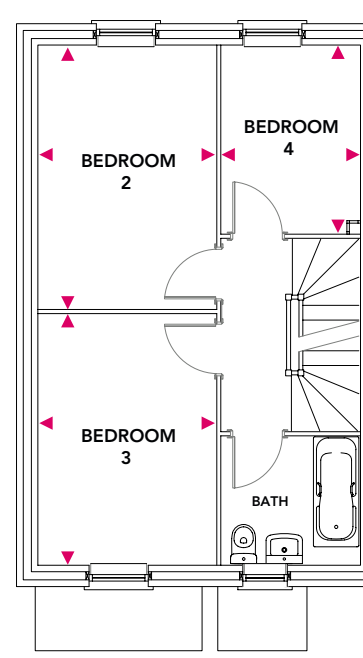
Bedroom 1

6.11m x 3.80m

Ground Floor



First Floor



Second Floor

