



The Elm is a 1 bedroom apartment which benefits from open plan living combining the kitchen, diner and living room to give you more flexible space.

This apartment also benefits from a large bathroom and store cupboard.

The kitchen comes equipped with a high quality Bosch oven, gas hob and extractor, with space for a washing machine, dishwasher and fridge/freezer.

The ground floor apartment comes fitted with wood effect ceramic tiles to hallway, kitchen, dining and living room. The first floor comes fitted with wood effect vinyl to the kitchen and bathroom. The remaining rooms are carpeted in neutral tones.

Plots 35[†], 36[†], 43, 44

†affordable home

Total Area = 52m² Ground Floor

Total Area = 55m² First Floor

Ground Floor Apartment

Kitchen/Dining/Living

6.71m x 3.14m

Bedroom 1

4.50m x 2.75m

First Floor Apartment

Kitchen/Dining/Living

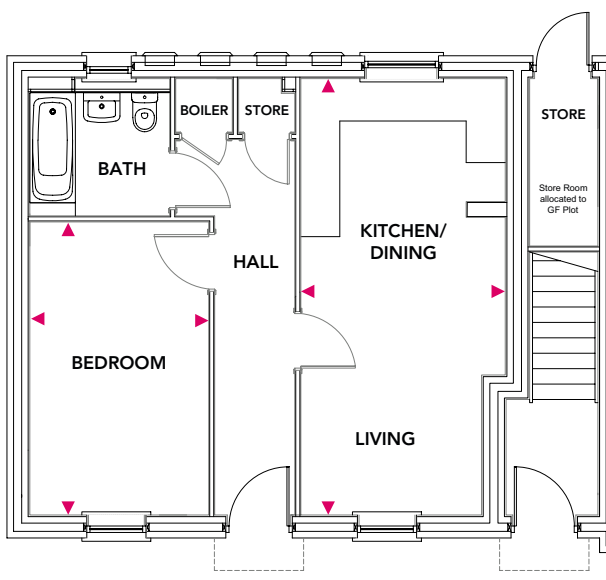
6.71m x 3.33m

Bedroom 1

4.16m x 3.02m

Ground Floor Apartment

Plots 35[†], 43 both with separate store



First Floor Apartment

Plots 36[†], 44

