



The welcoming hallway of the Weston opens onto a light and airy kitchen/diner which provides a great space to spend time and entertain.

The kitchen comes equipped with a high quality Bosch oven, gas hob and extractor, with space for a washing machine, dishwasher and fridge/freezer. The hallway leads to a downstairs cloak room and beyond to a spacious lounge with French windows opening onto the garden.

Upstairs are two spacious double bedrooms and a stylish family bathroom. The lounge and bedrooms are carpeted in neutral tones, with wood effect ceramic tiles to the hall, kitchen/diner, cloak room and vinyl to the family bathroom.

Plot 15, 18, 20, 23[†], 27, 28, 29[†], 30[†], 33[†]

[†]affordable home

Total Area = 65m²

Ground Floor

Kitchen/Dining

4.42m x 2.28m

Living

4.34m x 2.75m

First Floor

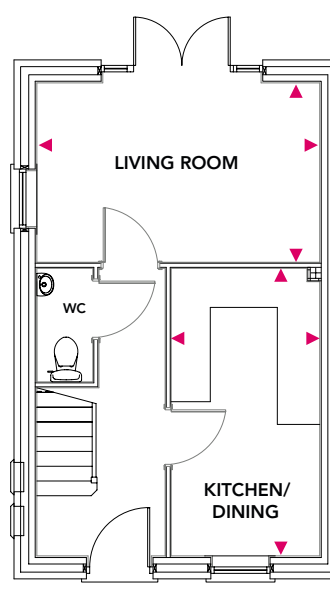
Bedroom 1

4.34m x 2.50m

Bedroom 2

4.34m x 2.57m

Ground Floor



First Floor

