



www.nuplace.co.uk

This three bedroom home features a spacious hallway which opens up to a large living room and a handy downstairs w/c. An open plan kitchen/diner with French doors to the rear garden, this home is ideal for modern living.

The kitchen comes equipped with a high quality Bosch oven, gas hob and extractor, with space for a washing machine, dishwasher and fridge/freezer.

The master bedroom benefits from an ensuite plus two further bedrooms and a family bathroom.

The lounge and bedrooms are carpeted in neutral tones, with wood effect ceramic tiles to the hall, kitchen/diner, cloak room and vinyl to the family bathroom and ensuite.

Plots 1-4, 16, 17, 24, 25, 45⁺, 46⁺

†affordable home

Total Area = 69m²

Ground Floor

Kitchen/Dining

5.24m x 2.86m

Living

5.10m x 3.14m

First Floor

Bedroom 1

3.33m x 3.09m

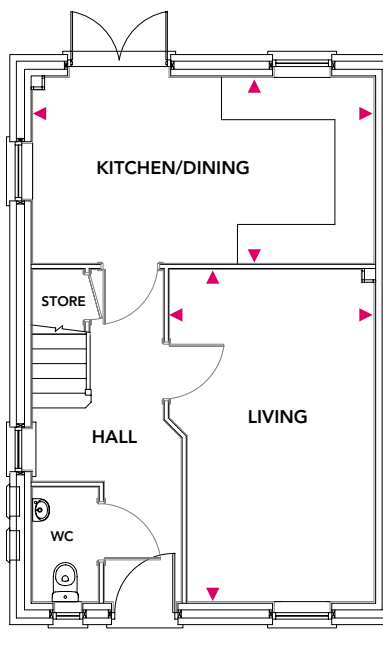
Bedroom 2

3.45m x 3.09m

Bedroom 3

2.88m x 2.40m

Ground Floor



First Floor

