



The Highfield is an excellent four bedroom home which comes with a separate detached garage.

The ground floor of the property benefits from a spacious family living room, a downstairs w/c and a large open plan kitchen/diner with French doors which open onto the garden.

The kitchen comes equipped with a high quality Bosch double oven, gas hob and extractor, with space for a washing machine, dishwasher and fridge/freezer.

The first floor features a master bedroom and ensuite plus three further bedrooms and family bathroom.

The lounge and bedrooms are carpeted in neutral tones, with wood effect ceramic tiles to the hall, kitchen/diner, cloak room and vinyl to the family bathroom and ensuite.

Plots 32, 33 both with garage

Total Area = 106m²

Ground Floor

Kitchen/Dining

6.03m x 4.49m

Living

4.14m x 3.47m

First Floor

Bedroom 1

3.85m x 3.24m

Bedroom 3

3.10m x 2.21m

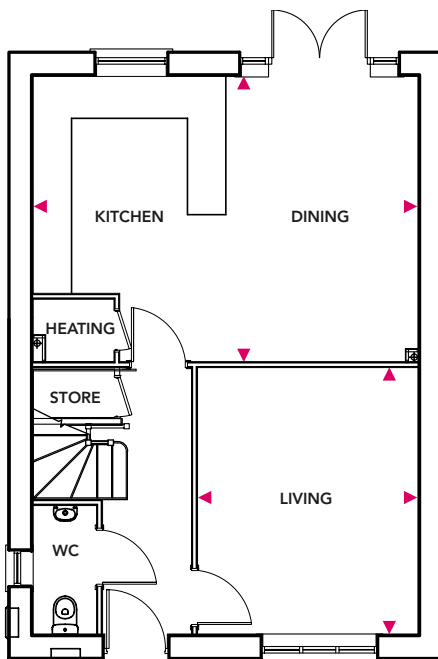
Bedroom 2

3.49m x 2.83m

Bedroom 4

2.71m x 2.69m

Ground Floor



First Floor

