



Specialist Accommodation Accessible and Adaptable Dwelling

www.nuplace.co.uk

Dimensions stated are approximate measurements only and should not be used as a basis for furnishings, furniture or appliance spaces etc.
Dimensions for such purposes must be verified against actual site measurements. Please note the handing of plots may vary from the floor plans shown.
Please check individual plot details with the Nuplace team. CGI images are for illustrative purposes only. Materials and finishes may vary from the images displayed.

The Rosewood is a 3 bedroom house which has been designed as an accessible and adaptable dwelling.

This home can cater for a range of mobility requirements to help people to live independently and improve confidence in the home.

On the ground floor the open plan kitchen diner – with a separate living room and downstairs W/C which could be easily converted into a shower room if required.

All three bedrooms are located on the first floor with a sizeable family bathroom.

The kitchen comes equipped with a high quality NEFF Slide & Hide oven, induction hob and extractor, with space for a washing machine, dishwasher and fridge/freezer.

The lounge and bedrooms are carpeted in neutral tones, with wood effect ceramic tiles to the hall, kitchen/diner and vinyl to the family bathroom and cloak room.

Plot 17*, 26

*with carport

Total Area = 85m²

Ground Floor

Kitchen/Dining

5.24m x 2.81m

Living

5.24m x 3.03m

First Floor

Bedroom 1

5.24m x 3.03m

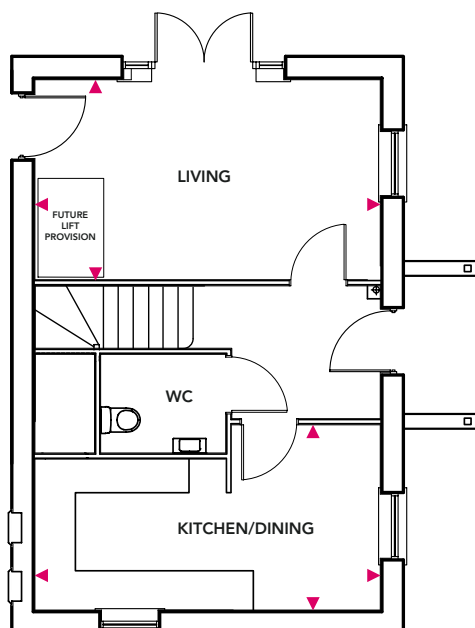
Bedroom 3

2.79m x 2.17m

Bedroom 2

2.98m x 2.68m

Ground Floor



First Floor

