



Specialist Accommodation Accessible and Adaptable Dwelling

www.nuplace.co.uk

The Goodall is 2 bedroom dormer bungalow which has been designed as an accessible and adaptable dwelling.

The spacious ground floor of the property features a downstairs bedroom with French doors which lead onto the garden, a downstairs and a wheelchair charging point.

The living space also includes an open plan kitchen/diner and living room which makes it easy for people to get around and enjoy.

The kitchen comes equipped with a high quality NEFF Slide & Hide oven, induction hob and extractor, with space for a washing machine, dishwasher and fridge/freezer.

A second bedroom, family bathroom and store cupboard are situated on the second floor of the property.

The lounge and bedrooms are carpeted in neutral tones, with wood effect ceramic tiles to the hall and kitchen/diner/living area with vinyl to the bathroom and WC.

Plot 5

Total Area = 85m²

Ground Floor

Kitchen/Dining/Living

6.93m x 4.62m

Bedroom 1

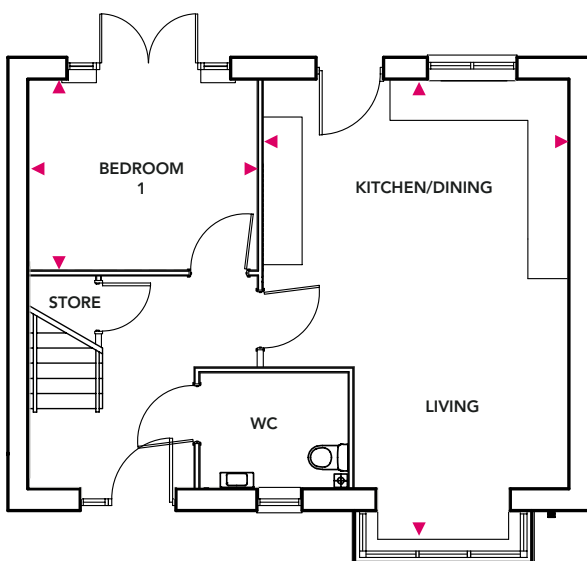
3.45m x 2.92m

First Floor

Bedroom 2

4.39m x 4.28m

Ground Floor



First Floor

