



Specialist Accommodation Accessible and Adaptable Dwelling

www.nuplace.co.uk

Dimensions stated are approximate measurements only and should not be used as a basis for furnishings, furniture or appliance spaces etc.
Dimensions for such purposes must be verified against actual site measurements. Please note the handing of plots may vary from the floor plans shown.
Please check individual plot details with the Nuplace team. CGI images are for illustrative purposes only. Materials and finishes may vary from the images displayed.

The Farrington is a 2 bedroom house which has been designed as an accessible and adaptable dwelling.

With two large bedrooms and a bathroom this home can cater for a range of mobility requirements to help people to live independently and improve confidence in the home.

Situated on the ground floor is an open plan living and diner which provides a great living space – with separate kitchen. The living room features French doors which open onto the garden. This property also benefits from a downstairs w/c which could be easily converted into a shower room if required. Both bedrooms and a large family bathroom are located on the first floor.

The kitchen comes equipped with a high quality NEFF Slide & Hide oven, induction hob and extractor, with space for a washing machine, dishwasher and fridge/freezer.

The lounge and bedrooms are carpeted in neutral tones, with wood effect ceramic tiles to the hallway, kitchen and vinyl to the family bathroom and cloak room.

Plots 14†, 15

†affordable homes

Total Area = 74m²

Ground Floor

Kitchen

2.91m x 2.70m

Living/Dining

4.79m x 3.18m

First Floor

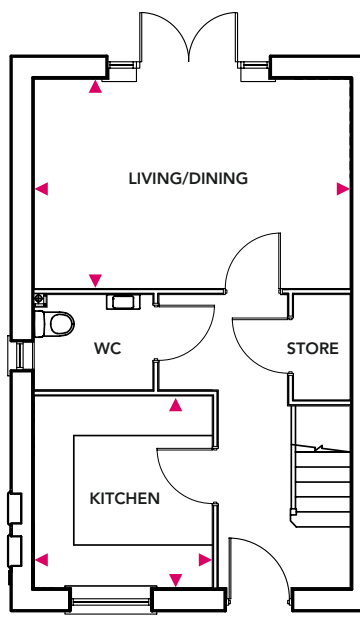
Bedroom 1

4.79m x 3.00m

Bedroom 2

4.79m x 2.70m

Ground Floor



First Floor

