



Specialist Accommodation Accessible and Adaptable Dwelling

[www.nuplace.co.uk](http://www.nuplace.co.uk)

The Freeston is a 1 bedroom apartment which has been designed as an accessible and adaptable dwelling. This apartment can cater for a range of mobility requirements to help people to live independently and improve confidence in the home.

The apartment is open plan featuring a kitchen, diner and living room. Also benefiting from a large bathroom which could be easily converted into a shower room if required (note: applicable to the ground floor only) and store cupboard.

The kitchen comes equipped with a high quality NEFF Slide & Hide oven, induction hob and extractor, with space for a washing machine, dishwasher and fridge/freezer.

The lounge and bedroom are carpeted in neutral tones, with wood effect vinyl to the kitchen and bathroom.

**Plots 49, 50, 51, 52**

**Total Area = 51m<sup>2</sup> Ground Floor**

**Total Area = 61m<sup>2</sup> First Floor**

## Ground Floor Apartment

**Kitchen/Dining/Living**

6.71m x 3.48m

**Bedroom 1**

4.63m x 2.75m

## First Floor Apartment

**Kitchen/Dining/Living**

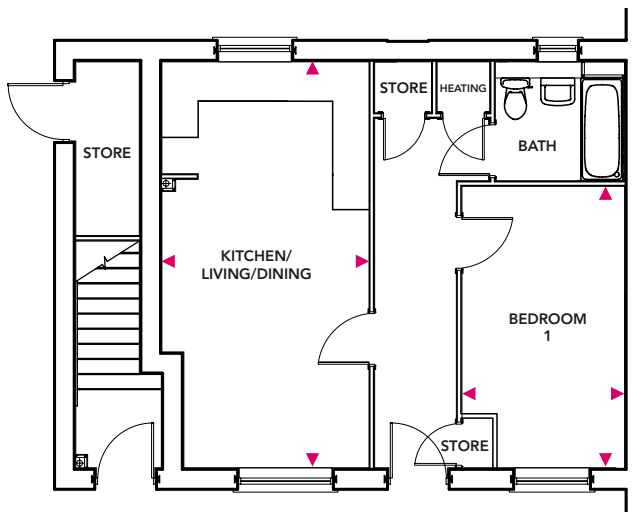
6.71m x 3.47m

**Bedroom 1**

4.36m x 3.02m

## Ground Floor Apartment

**Plots 49, 51**



## First Floor Apartment

**Plots 50, 52**

