



The Appleby is a beautiful four bedroom two and a half storey home.

The property benefits from a spacious family living room with French doors which open to the rear garden. A large open plan kitchen/diner which provides a great space for family dining and entertaining.

The kitchen comes equipped with a high quality Bosch double oven, gas hob and extractor, with space for a washing machine, dishwasher and fridge/freezer.

The first floor features three sizeable bedrooms and the family bathroom. With the master bedroom and ensuite situated on the second floor of the property.

The lounge and bedrooms are carpeted in neutral tones, with wood effect ceramic tiles to the hall, kitchen/diner, cloak room and vinyl to the family bathroom and ensuite.

**Plots 8, 9, 12, 13, 19,  
20, 28\*, 29\*, 42, 43**  
\* with garage

**Total Area = 110m<sup>2</sup>**

## Ground Floor

**Kitchen/Dining**  
5.08m x 2.74m

**Living**  
4.91m x 3.55m

## First Floor

**Bedroom 2**  
4.02m x 2.71m

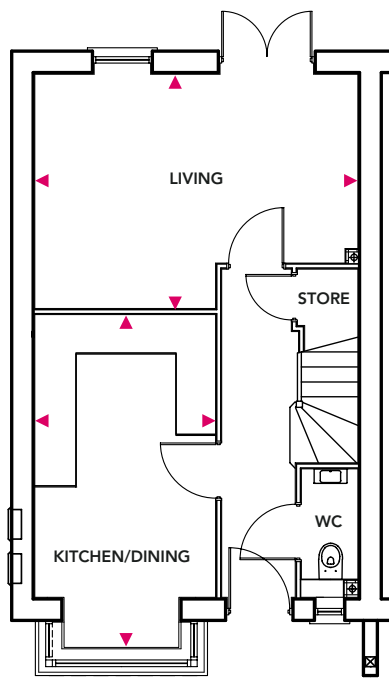
**Bedroom 3**  
3.82m x 2.71m

**Bedroom 4**  
2.86m x 2.10m

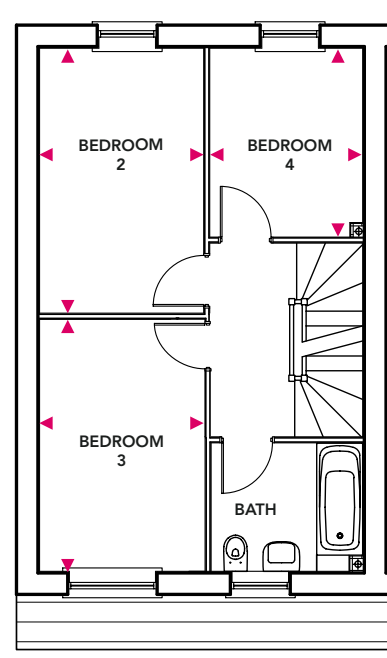
## Second Floor

**Bedroom 1**  
6.93m x 3.80m

### Ground Floor



### First Floor



### Second Floor

