

Plots 1, 2, 16, 17, 19, 20, 30, 31

Total Area = 81.9m<sup>2</sup>

## Ground Floor

### Kitchen/Dining

5.04m x 3.98m

### Living

5.94m x 2.94m

## First Floor

### Bedroom 1

3.52m x 2.17m

### Bedroom 2

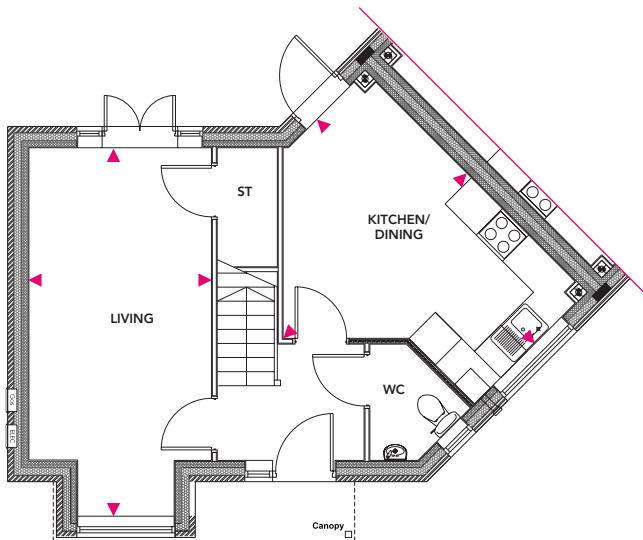
4m x 2.57m

### Bedroom 3

2.37m x 1.92m



Ground Floor



First Floor

