



The welcoming hallway of the Weston opens onto a light and airy kitchen/diner which provides a great space to spend time and entertain.

The kitchen comes equipped with a high quality Bosch oven, gas hob and extractor, with space for a washing machine, dishwasher and fridge/freezer. The hallway leads to a downstairs cloak room and beyond to a spacious lounge with French windows opening onto the garden.

Upstairs are two spacious double bedrooms and a stylish family bathroom. The lounge and bedrooms are carpeted in neutral tones, with wood effect ceramic tiles to the hall, kitchen/diner, cloak room and vinyl to the family bathroom.

**Plot 48, 49, 58, 59, 60, 62, 63, 75, 76**

**Total Area = 63m<sup>2</sup>**

## Ground Floor

**Kitchen/Dining**

4.42m x 2.28m

**Living**

4.34m x 2.75m

## First Floor

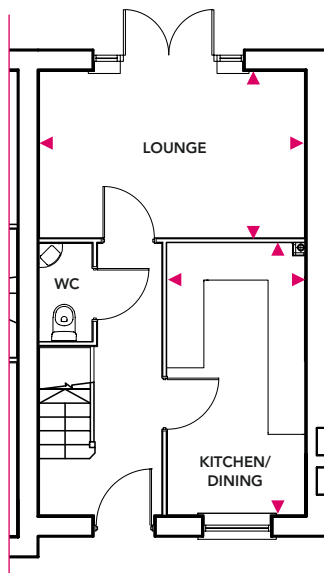
**Bedroom 1**

4.34m x 2.50m

**Bedroom 2**

4.34m x 2.57m

## Ground Floor



## First Floor

