



This 3 bedroom semi-detached property is spread across 3 floors and offers great space for growing families.

The ground floor includes a spacious lounge with French doors, which open out into the rear garden, an open plan kitchen/diner and a downstairs w/c.

The kitchen comes equipped with a high quality Bosch oven, gas hob and extractor, with space for a washing machine, dishwasher and fridge/freezer.

The first floor of the property features two sizeable bedrooms and also a family bathroom.

The third master bedroom and ensuite are situated separately on the second floor of the property.

The lounge and bedrooms are carpeted in neutral tones, with wood effect ceramic tiles to the hall, kitchen/diner, cloak room and vinyl to the family bathroom and ensuite.

**Plot 43, 44, 67\*, 68, 73, 74\***

\*with garage

**Total Area = 85m<sup>2</sup>**

## Ground Floor

**Kitchen/Dining**

4.90m x 2.14m

**Living**

4.23m x 2.95m

## First Floor

**Bedroom 2**

4.23m x 2.67m

**Bedroom 3**

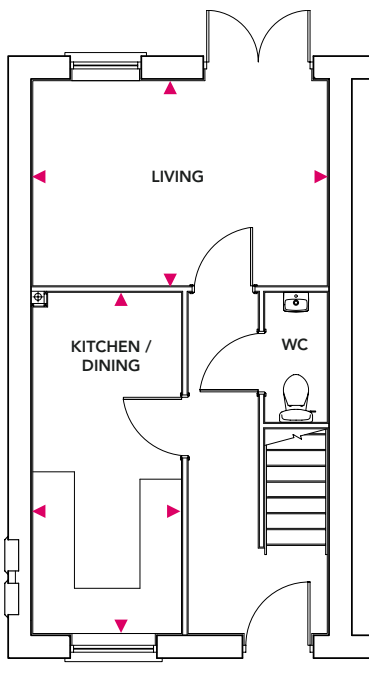
5.08m x 4.23m

## Second Floor

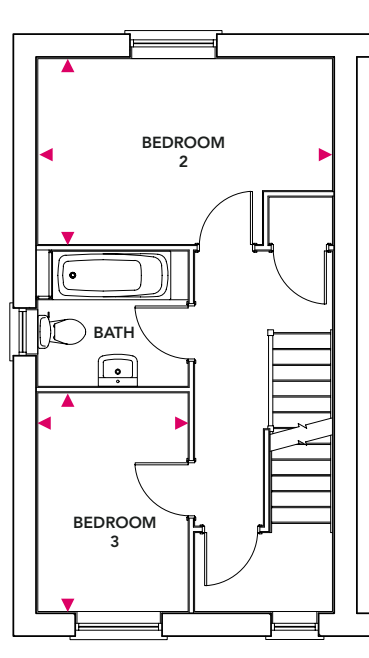
**Bedroom 1**

3.14m x 2.16m

### Ground Floor



### First Floor



### Second Floor

