



This four bedroom home is ideal for families looking for a spacious and flexible layout.

The ground floor includes a spacious lounge and an open plan kitchen/diner which benefits from french doors opening out into the rear garden.

The kitchen comes equipped with a high quality Bosch double oven, gas hob and extractor, with space for a washing machine, dishwasher and fridge/freezer. Also situated on this floor is a useful downstairs w/c and utility room.

All four bedrooms and family bathroom are located on the first floor. The master bedroom benefits from an en suite.

The lounge and bedrooms are carpeted in neutral tones, with wood effect ceramic tiles to the hall, kitchen/diner, utility and vinyl to the family bathroom and ensuite.

Plot 41*, 42, 55*, 56*

*with garage

Total Area = 85m²

Ground Floor

Kitchen/Dining

6.03m x 4.48m

Living

4.16m x 3.47m

First Floor

Bedroom 1

3.68m x 3.06m

Bedroom 3

3.07m x 2.65m

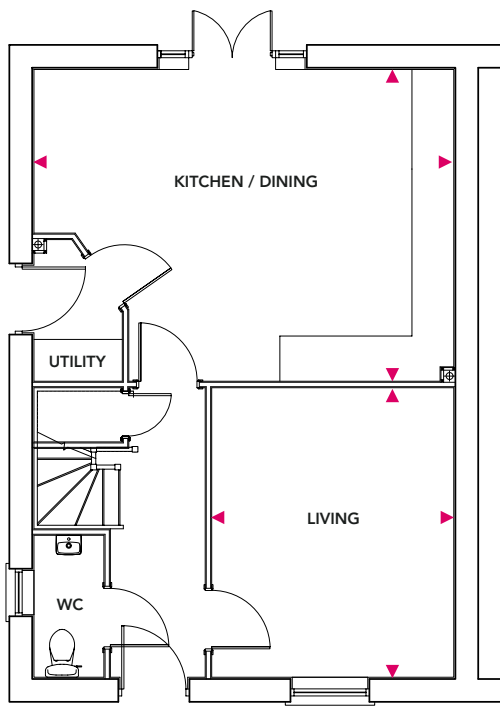
Bedroom 2

3.66m x 2.86m

Bedroom 4

2.87m x 2.61m

Ground Floor



First Floor

