



A place to call home

Blossom Walk Hadley



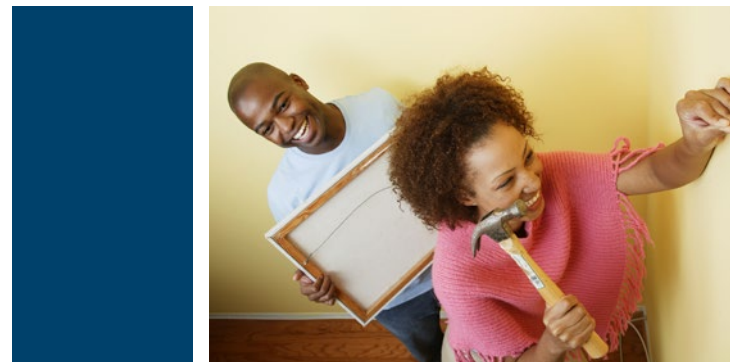
The new way to rent your Nuplace in Telford

Welcome to Blossom Walk

Blossom Walk features 25 two and three bedroom homes to rent in Hadley. The site offers the option of two bedroom apartments, as well as two and three bedroom houses.

The development is ideally located on the doorstep of local amenities and retailers in Hadley Local Centre. It is also within close proximity to local schools, leisure facilities and within easy reach of the local market town of Wellington, Telford Town Park and Telford Town Centre, as well as good access links to the M54.

If you're looking to rent a Nuplace home at Blossom Walk, this brochure contains all of the information you need.





Weston
2 bedroom house
Plots 8-13, 16, 17, 22



Westwood
3 bedroom house
Plots 18, 20*, 21*, 23



Beeston
2 bedroom apartment
Plots 1, 2†, 3, 4†, 5, 6†



Kedington
2 bedroom house
Plots 7, 14, 15, 19



Leeswood
3 bedroom house
Plots 24, 25

BCP - Bin Collection Point
V - Visitor Parking Space
* with garage
† affordable housing

Plots 1-6

Total Area = 63.5m²

Kitchen/Dining/Lounge

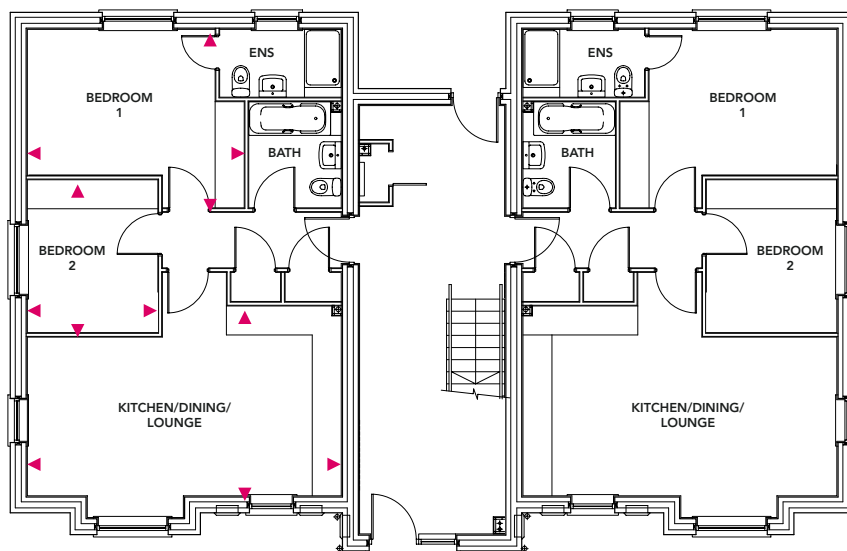
6.53m x 3.92m

Bedroom 1

4.47m x 3.66m

Bedroom 2

3.15m x 2.69m



Plots 8-13, 16, 17, 22

Total Area = 63m²

Ground Floor

Kitchen/Dining

4.45m x 2.25m

Living

4.29m x 2.72m

First Floor

Bedroom 1

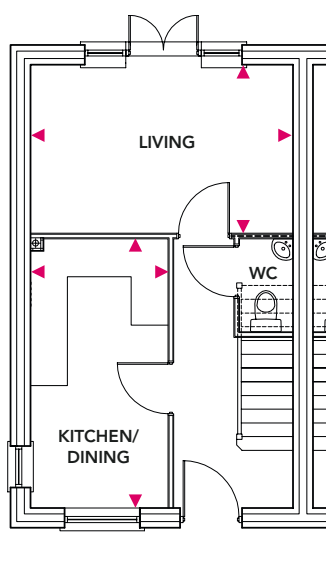
4.29m x 2.51m

Bedroom 2

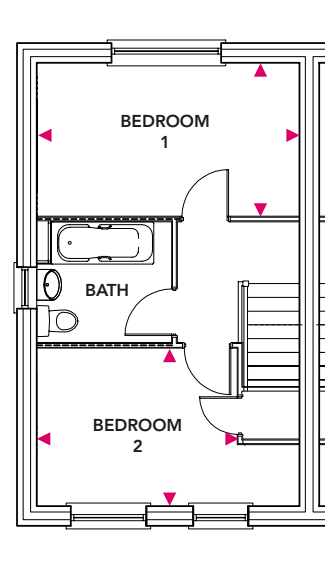
3.28m x 2.59m



Ground Floor



First Floor



Plots 7, 14, 15, 19

Total Area = 69m²

Ground Floor

Kitchen/Dining

4.23m x 2.49m

Living

4.23m x 2.83m

First Floor

Bedroom 1

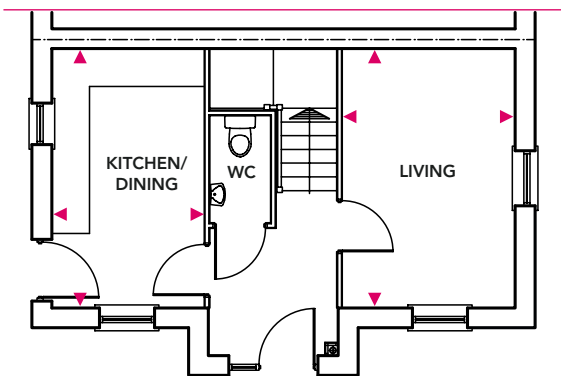
4.23m x 2.83m

Bedroom 2

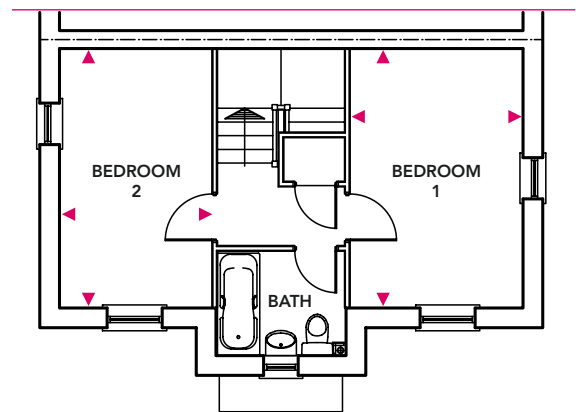
4.23m x 2.49m



Ground Floor



First Floor



Plots 18, 20*, 21*, 23

*with garage, see site plan for details

Total Area = 85.9m²

Ground Floor

Kitchen/Dining

5.24m x 2.86m

Living

5.10m x 3.14m

First Floor

Bedroom 1

3.33m x 3.09m

Bedroom 2

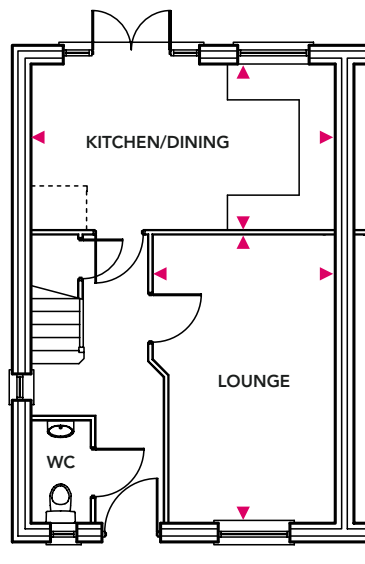
3.45m x 2.75m

Bedroom 3

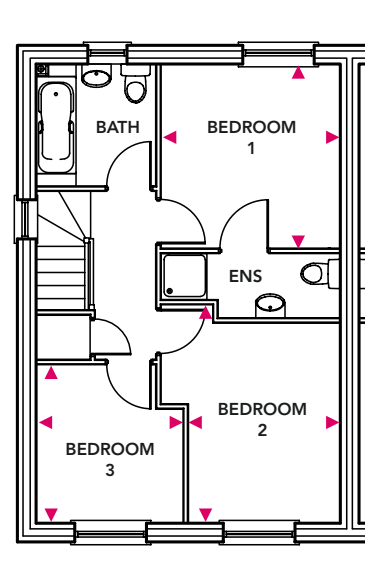
2.96m x 2.40m



Ground Floor



First Floor



Plots 24, 25

Total Area = 89.9m²

Ground Floor

Kitchen/Dining

4.68m x 3.75m

Living

5.34m x 3.23m

First Floor

Bedroom 1

4.05m x 3.23m

Bedroom 2

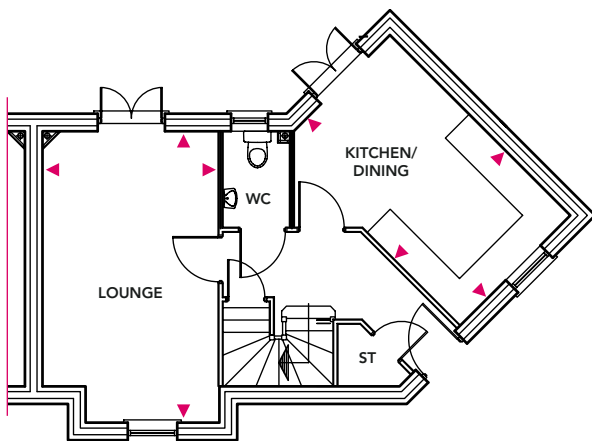
5.25m x 2.48m

Bedroom 3

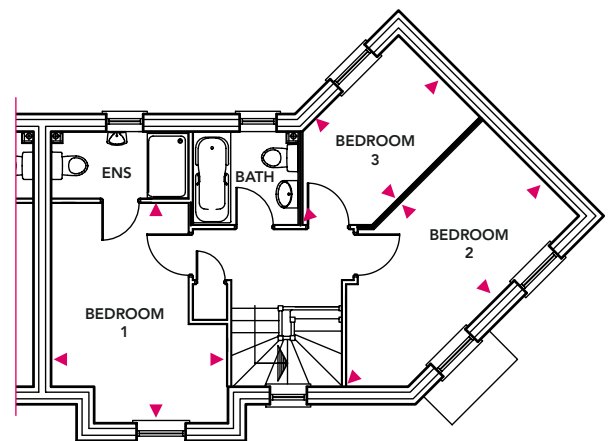
3.71m x 2.10m



Ground Floor



First Floor



Blossom Walk, Hadley TF1 5PH

The below information should help to show what amenities are close to Blossom Walk.

Education

Nursery, Infant & Primary Schools	Distance
Hadley Learning Community	0.3 miles
Millbrook Primary School	0.7 miles
Secondary & Higher Education	
Hadley Learning Community	0.3 miles
Charlton School	1.9 miles
Telford College of Arts & Technology	1.6 miles
Further Education	
University of Wolverhampton, Telford Campus	3.6 miles
University Centre Telford, Southwater One	3.8 miles
Harper Adams University	7.5 miles

To find out what other educational establishments are also in this area visit www.telford.gov.uk/admissions

Transport

Bus stop	Bus service	Route
	7	Wellington to Telford Town Centre
<u>Bus station, Hadley</u>	15	Oakengates, Wombridge, Hadley, Leegomery, Princess Royal Hospital, Wellington and Dothill
	16	Malinslee, Dawley Bank, Overdale, Hadley, Princess Royal Hospital, Wellington, Dothill, Admaston, Shawbirch, Rodington and Roden
	15	As above
<u>Britannia Way</u>	16	As above

For more information about local bus services visit www.arriva.co.uk

Train Service	Distance
Telford Central	3.6 miles

For information about local train routes visit www.nationalrail.co.uk

Motorway Links	Distance
M54 Junction 6	1.8 miles

Local Amenities	Distance
Nearest Aspirations Centre is Oakengates Leisure Centre	2.1 miles
Tesco Express (Hadley Centre, High Street)	0.5 miles
Tesco Extra (Wrekin Retail Park)	1.6 mile
Hadley Community Library	0.5 miles
First Point (Southwater)	3.3 miles
Rowlands Pharmacy (Hadley Centre, High Street)	0.5 miles
Local Attractions	Distance
Telford Ski Slope	6.5 miles
Ironbridge	6.5 miles
Telford Town Park	4.8 miles
Wonderland (Telford Town Park)	5.4 miles
Telford International Centre	4.7 miles
Southwater	3.3 miles
Cineworld Telford	3.3 miles
Telford Ice Rink	3.8 miles
Telford Shopping Centre	3.4 miles
Oakengates Theatre	2.8 miles
Business Parks	Distance
Stafford Park	4.4 miles
Telford 54	2.5 miles
Healthcare	Distance
Doctors	
Hadley Health Centre	0.5 miles
Dentist	
Hadley Dental Practice	0.5 miles
Hospital	
Telford Princess Royal Hospital	1.7 miles
Your nearest NHS Walk-in Centre is also at PRH	

Blossom Walk, Hadley - Reserve your plot today!

Plot No.	House Name	Rent (per calendar month)
1-6	Beeston 2 bedroom apartment	From £575
8-13, 16, 17, 22	Weston 2 bedroom house	From £610
7, 14, 15, 19	Kedington 2 bedroom house	From £620
18, 20*, 21*, 23	Westwood 3 bedroom house	From £685
24, 25	Leeswood 3 bedroom house	From £725

**Plots include a garage.*

Holding fee - To make sure you don't miss out on a Nuplace home, you can reserve your plot now for £200.

Deposit - Six weeks rent plus one month's rent is required prior to the handover of keys.

Rental prices correct as of May 2017