



A place to call home

# Blossom Walk Hadley



The new way to rent your Nuplace in Telford

## Welcome to Blossom Walk

Blossom Walk features 25 two and three bedroom homes to rent in Hadley. The site offers the option of two bedroom apartments, as well as two and three bedroom houses.

The development is ideally located on the doorstep of local amenities and retailers in Hadley Local Centre. It is also within close proximity to local schools, leisure facilities and within easy reach of the local market town of Wellington, Telford Town Park and Telford Town Centre, as well as good access links to the M54.

If you're looking to rent a Nuplace home at Blossom Walk, this brochure contains all of the information you need.





**Weston**  
2 bedroom house  
Plots 8-13, 16, 17, 22



**Westwood**  
3 bedroom house  
Plots 18, 20\*, 21\*, 23



**Beeston**  
2 bedroom apartment  
Plots 1, 2†, 3, 4†, 5, 6†



**Kedington**  
2 bedroom house  
Plots 7, 14, 15, 19



**Leeswood**  
3 bedroom house  
Plots 24, 25

**BCP - Bin Collection Point**  
**V - Visitor Parking Space**  
\* with garage  
† affordable housing

## Plots 1-6

Total Area = 63.5m<sup>2</sup>

### Kitchen/Dining/Lounge

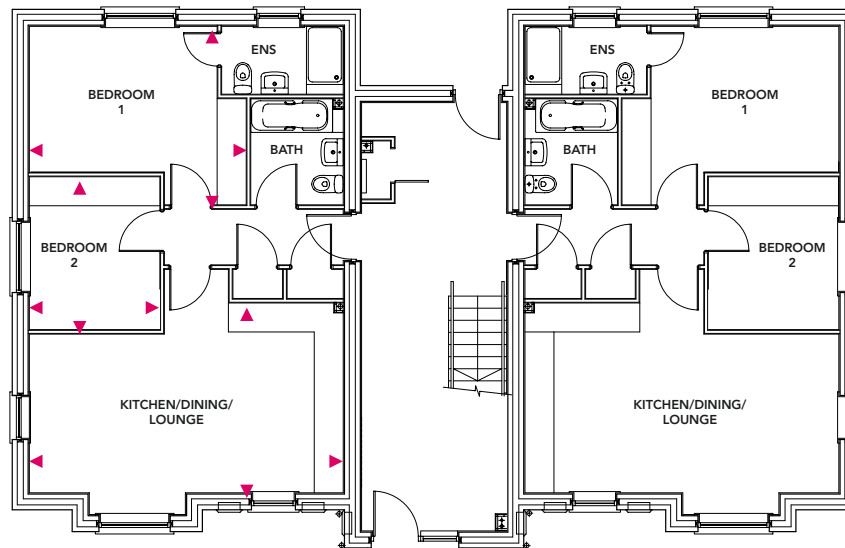
6.53m x 3.92m

### Bedroom 1

4.47m x 3.66m

### Bedroom 2

3.15m x 2.69m



**Plots 8-13, 16, 17, 22**

**Total Area = 63m<sup>2</sup>**

## Ground Floor

**Kitchen/Dining**

4.45m x 2.25m

**Living**

4.29m x 2.72m

## First Floor

**Bedroom 1**

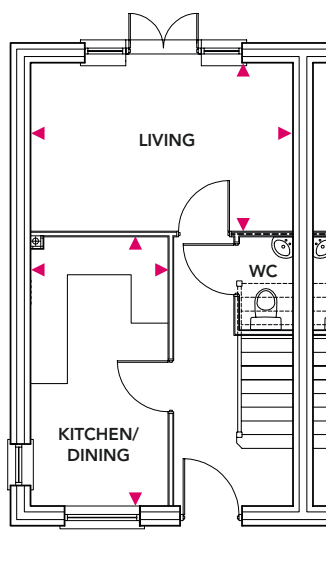
4.29m x 2.51m

**Bedroom 2**

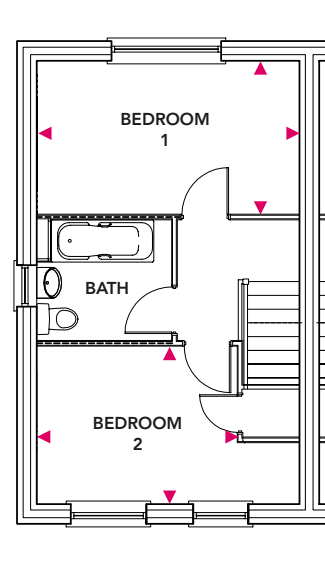
3.28m x 2.59m



**Ground Floor**



**First Floor**



**Plots 7, 14, 15, 19**

**Total Area = 69m<sup>2</sup>**

## Ground Floor

**Kitchen/Dining**

4.23m x 2.49m

**Living**

4.23m x 2.83m

## First Floor

**Bedroom 1**

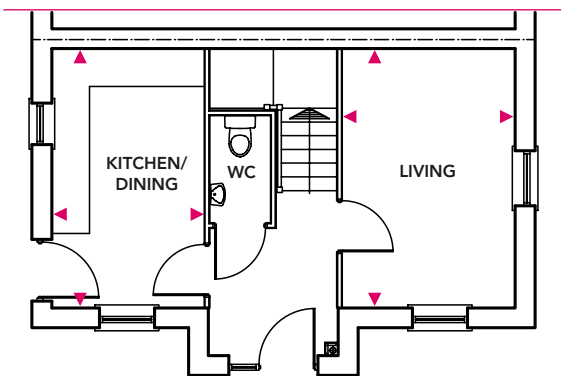
4.23m x 2.83m

**Bedroom 2**

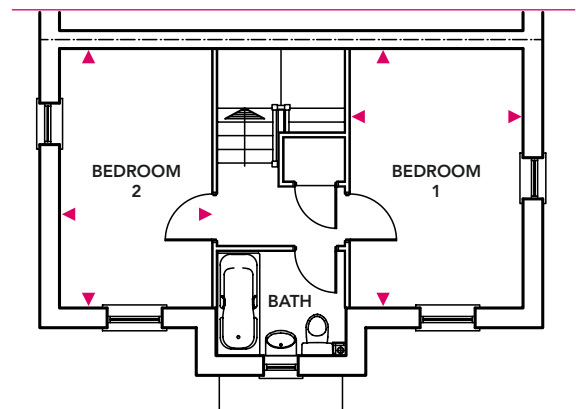
4.23m x 2.49m



**Ground Floor**



**First Floor**



**Plots 18, 20\*, 21\*, 23**

\*with garage, see site plan for details

**Total Area = 85.9m<sup>2</sup>**

## Ground Floor

**Kitchen/Dining**

5.24m x 2.86m

**Living**

5.10m x 3.14m

## First Floor

**Bedroom 1**

3.33m x 3.09m

**Bedroom 2**

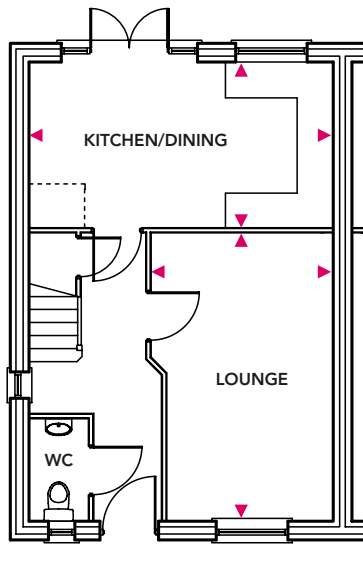
3.45m x 2.75m

**Bedroom 3**

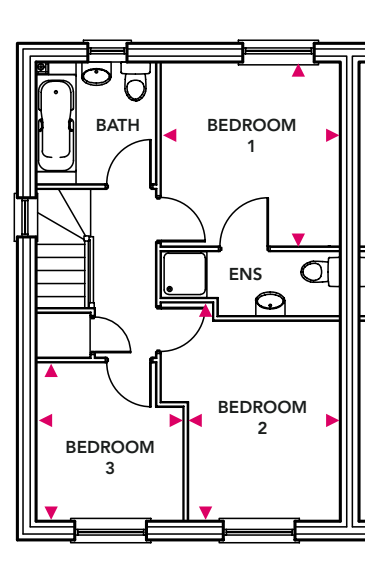
2.96m x 2.40m



## Ground Floor



## First Floor



**Plots 24, 25**

**Total Area = 89.9m<sup>2</sup>**

## Ground Floor

**Kitchen/Dining**

4.68m x 3.75m

**Living**

5.34m x 3.23m

## First Floor

**Bedroom 1**

4.05m x 3.23m

**Bedroom 2**

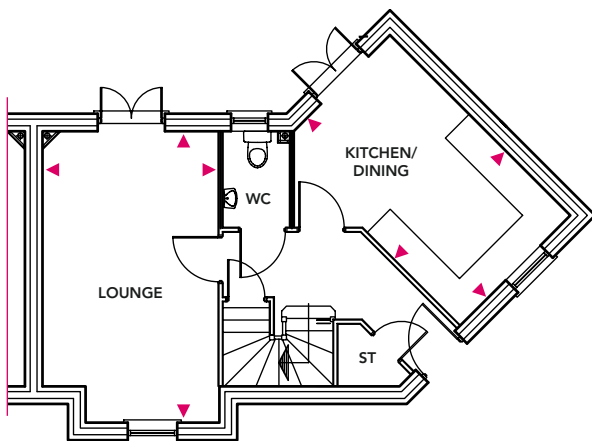
5.25m x 2.48m

**Bedroom 3**

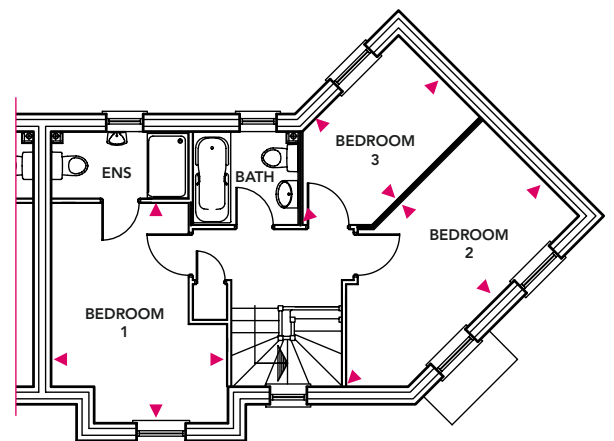
3.71m x 2.10 m



**Ground Floor**



**First Floor**





## Blossom Walk, Hadley TF1 5PH

The below information should help to show what amenities are close to Blossom Walk.

### Education

| <b>Nursery, Infant &amp; Primary Schools</b> | <b>Distance</b> |
|--|-----------------|
| Hadley Learning Community                    | 0.3 miles       |
| Millbrook Primary School                     | 0.7 miles       |
| <b>Secondary &amp; Higher Education</b>      |                 |
| Hadley Learning Community                    | 0.3 miles       |
| Charlton School                              | 1.9 miles       |
| Telford College of Arts & Technology         | 1.6 miles       |
| <b>Further Education</b>                     |                 |
| University of Wolverhampton, Telford Campus  | 3.6 miles       |
| University Centre Telford, Southwater One    | 3.8 miles       |
| Harper Adams University                      | 7.5 miles       |

To find out what other educational establishments are also in this area visit [www.telford.gov.uk/admissions](http://www.telford.gov.uk/admissions)

### Transport

| <b>Bus stop</b>                   | <b>Bus service</b> | <b>Route</b>   |
|-----------------------------------|--------------------|--|
|                                   | 7                  | Wellington to Telford Town Centre  |
| <b><u>Bus station, Hadley</u></b> | 15                 | Oakengates, Wombridge, Hadley, Leegomery, Princess Royal Hospital, Wellington and Dothill  |
|                                   | 16                 | Malinslee, Dawley Bank, Overdale, Hadley, Princess Royal Hospital, Wellington, Dothill, Admaston, Shawbirch, Rodington and Roden |
|                                   | 15                 | As above   |
| <b><u>Britannia Way</u></b>       | 16                 | As above   |

For more information about local bus services visit [www.arriva.co.uk](http://www.arriva.co.uk)

| <b>Train Service</b> | <b>Distance</b> |
|----------------------|-----------------|
| Telford Central      | 3.6 miles       |

For information about local train routes visit [www.nationalrail.co.uk](http://www.nationalrail.co.uk)

| <b>Motorway Links</b> | <b>Distance</b> |
|-----------------------|-----------------|
| M54 Junction 6        | 1.8 miles       |

| <b>Local Amenities</b>                                  | <b>Distance</b> |
|---|-----------------|
| Nearest Aspirations Centre is Oakengates Leisure Centre | 2.1 miles       |
| Tesco Express (Hadley Centre, High Street)              | 0.5 miles       |
| Tesco Extra (Wrekin Retail Park)                        | 1.6 mile        |
| Hadley Community Library                                | 0.5 miles       |
| First Point (Southwater)                                | 3.3 miles       |
| Rowlands Pharmacy (Hadley Centre, High Street)          | 0.5 miles       |
| <b>Local Attractions</b>                                | <b>Distance</b> |
| Telford Ski Slope                                       | 6.5 miles       |
| Ironbridge  | 6.5 miles       |
| Telford Town Park                                       | 4.8 miles       |
| Wonderland (Telford Town Park)                          | 5.4 miles       |
| Telford International Centre                            | 4.7 miles       |
| Southwater  | 3.3 miles       |
| Cineworld Telford                                       | 3.3 miles       |
| Telford Ice Rink  | 3.8 miles       |
| Telford Shopping Centre                                 | 3.4 miles       |
| Oakengates Theatre                                      | 2.8 miles       |
| <b>Business Parks</b>                                   | <b>Distance</b> |
| Stafford Park   | 4.4 miles       |
| Telford 54  | 2.5 miles       |
| <b>Healthcare</b>                                       | <b>Distance</b> |
| <b>Doctors</b>  |                 |
| Hadley Health Centre                                    | 0.5 miles       |
| <b>Dentist</b>  |                 |
| Hadley Dental Practice                                  | 0.5 miles       |
| <b>Hospital</b>   |                 |
| Telford Princess Royal Hospital                         | 1.7 miles       |
| Your nearest NHS Walk-in Centre is also at PRH          |                 |

**Blosson Walk, Hadley - Reserve your plot today!**

| Plot No.         | House Name   | Rent (per calendar month) |
|------------------|--|---------------------------|
| 2, 4, 6          | <b>Beeston</b> (Affordable housing)<br>2 bedroom apartment | From £460                 |
| 1, 3, 5          | <b>Beeston</b><br>2 bedroom apartment                      | From £575                 |
| 8-13, 16, 17, 22 | <b>Weston</b><br>2 bedroom house                           | From £610                 |
| 7, 14, 15, 19    | <b>Kedington</b><br>2 bedroom house                        | From £620                 |
| 18, 20*, 21*, 23 | <b>Westwood</b><br>3 bedroom house                         | From £685                 |
| 24, 25           | <b>Leeswood</b><br>3 bedroom house                         | From £725                 |

*\*Plots include a garage.*

**Holding fee** - To make sure you don't miss out on a Nuplace home, you can reserve your plot now for £200.

**Deposit** - Six weeks rent plus one month's rent is required prior to the handover of keys.

*Rental prices correct as of May 2017*