

**Plots 6, 7, 28, 49, 78, 79**  
**Total Area = 65.2m<sup>2</sup>**



## Ground Floor

### Kitchen/Dining

4.14m x 2.91m

### Living

3.76m x 3.08m

## First Floor

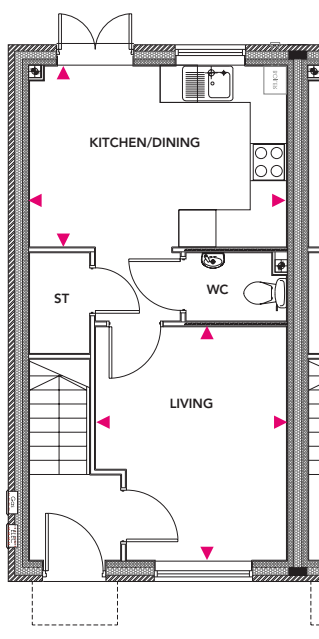
### Bedroom 1

3.05m x 3.04m

### Bedroom 2

4.14m x 2.65m

## Ground Floor



## First Floor

