



The welcoming central hallway of the Kedington leads to an open plan kitchen/diner, downstairs w/c and a generously sized lounge.

The kitchen comes equipped with a quality Bosch oven, gas hob and extractor, with space for a washing machine, dishwasher and larder style fridge/freezer.

On the first floor are two spacious bedrooms as well as a family sized bathroom and linen cupboard.

The lounge and bedrooms are carpeted in neutral tones, with wood effect ceramic tiles to the hall, kitchen/diner, and cloak room. The family bathroom comes complete with oak effect vinyl.

Plots 15, 21, 28, 38

Total Area = 69m²

Ground Floor

Kitchen/Dining

4.23m x 2.49m

Living

4.23m x 2.83m

First Floor

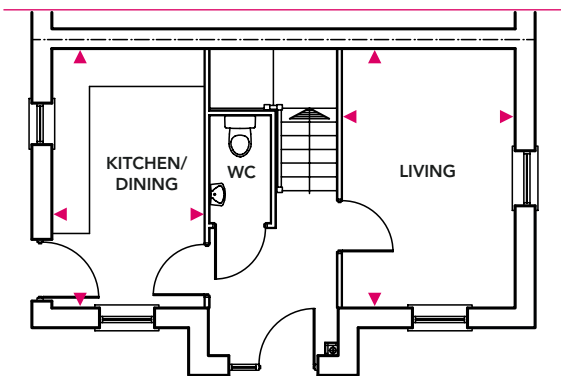
Bedroom 1

4.23m x 2.83m

Bedroom 2

4.23m x 2.49m

Ground Floor



First Floor

